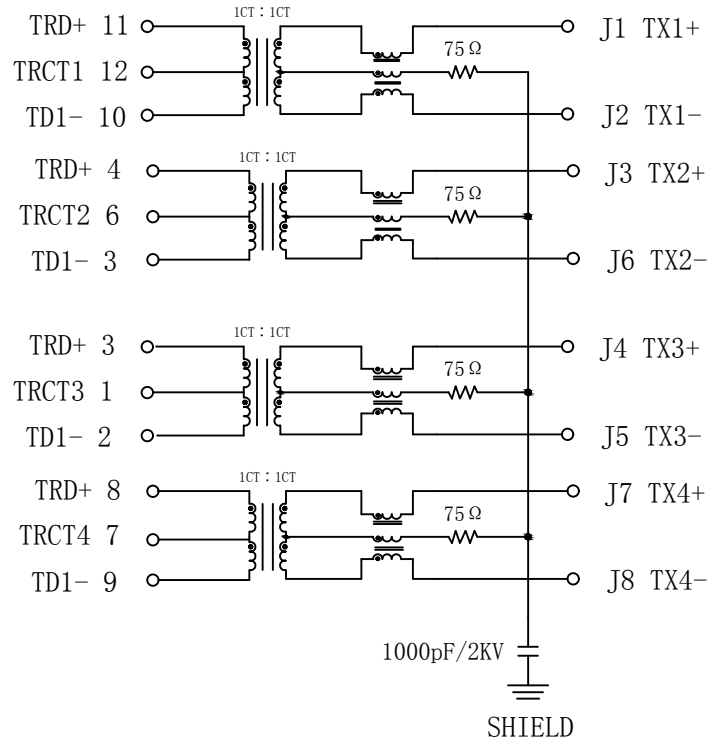


# Schematic:

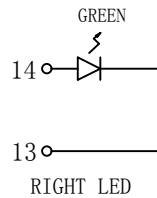
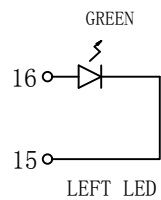
REV.	ECN NO.	DESCRIPTION	DATE	APPD
A	REL		2023-03-17	



## Electrical Specifications @25°C

- Turns Ratio ( $\pm 2\%$ ):  
Pri : Sec = 1CT : 1CT
- OCL (@100KHz, 100mV, 8mA DC Bias):  
350uH min
- Insertion Loss:  
1~100MHz: -1.0dB max
- Return Loss (dB min):  
1~10MHz: -20 ; 30MHz: -16  
60~80MHz: -12 ; 80~100MHz: -10
- Crosstalk (dB min):  
1~10MHz: -40 ; 32~65MHz: -35  
65~100MHz: -30
- Common Mode Rejection (dB min):  
1~100MHz: -30
- Hi-Pot: 1500Vrms
- Operating Temperature: 0°C ~ 70°C.

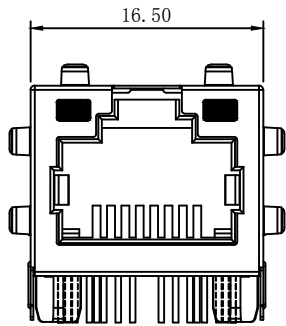
Emitting Color	$\lambda_p$ (nm)	VF@F=20mA	IR @VR=5V
GREEN	565	1.8~2.6V	10 $\mu$ A max



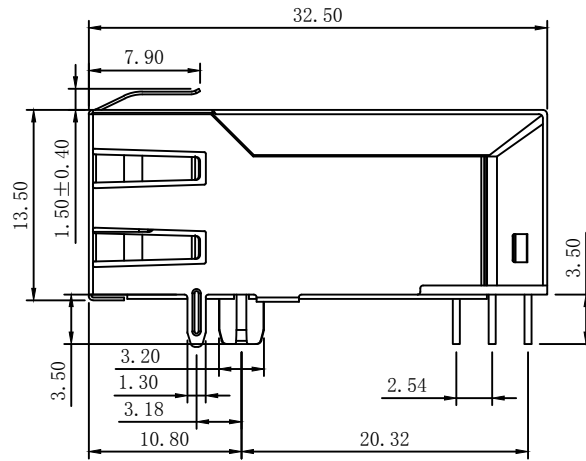
X:X	$\pm 0.30$	APPD: TOM	LINK-PP INT'L TECHNOLOGY CO., LIMITED	
X:XX	$\pm 0.25$	CHKD: JAMES	TITLE: RJ45 Connector with 1000 Base-T Integrated Magnetics	
X:XXX	$\pm 0.05$	DR: LEO		
ANGLES	$\pm 1^\circ$	UNIT: mm	PART NO.: LPJK0200AWNL	
	SCALE: 2/1	SHEET: 1/2	REV: A	DWG NO.: LP23031711

# Mechanical :

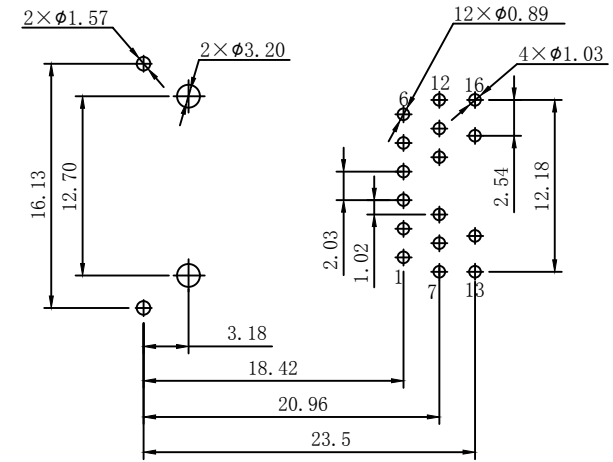
REV.	ECN NO.	DESCRIPTION	DATE	APPD
A	REL		2023-03-17	



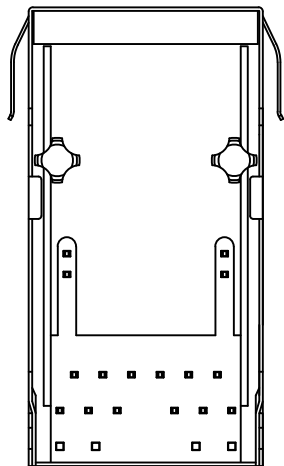
Front Side View



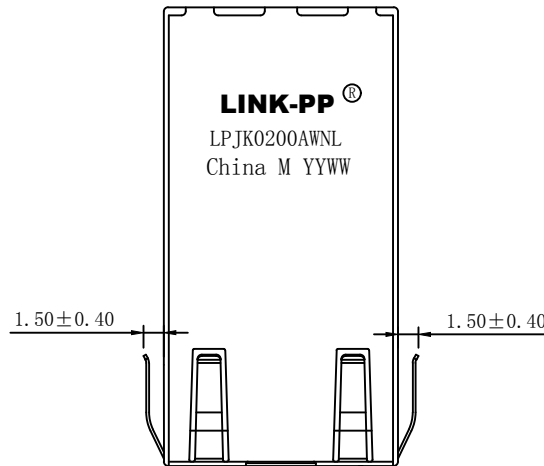
Left Side View



Suggested PCB Layout (Top View)



Bottom Side View



Top Side View



## NOTES:

1. Designed to support application, such as SOHO(ADSL modems), LAN-on-Motherboard (LOM), hub and Switches.
2. Meets IEEE 802.3af specification
3. Connector Materials:  
 Housing Material: Thermoplastic PBT+30%G. F UL94V-0  
 Contact Material: Phosphor Bronze C5210R-EH Thickness=0.35mm  
 Pins: Brass C2680R-H Thickness=0.35mm  
 Shield: SUS 304 1/2EH Thickness=0.2mm  
 Contact plating: Gold 6 micro-inches min. In contact area.
4. Wave solder tip temperature: 260°C, 5 Sec.
5. UL Certification: File Number E484635.

X:X	±0.30	APPD:	TOM	LINK-PP INT'L TECHNOLOGY CO., LIMITED
X:XX	±0.25	CHKD:	JAMES	
X:XXX	±0.05	DR:	LEO	TITLE: RJ45 Connector with 1000 Base-T Integrated Magnetics
ANGLES	±1°	UNIT:	mm	PART NO.: LPJK0200AWN
	SCALE: 2/1	SHEET: 2/2	REV: A	DWG NO.: LP23031711