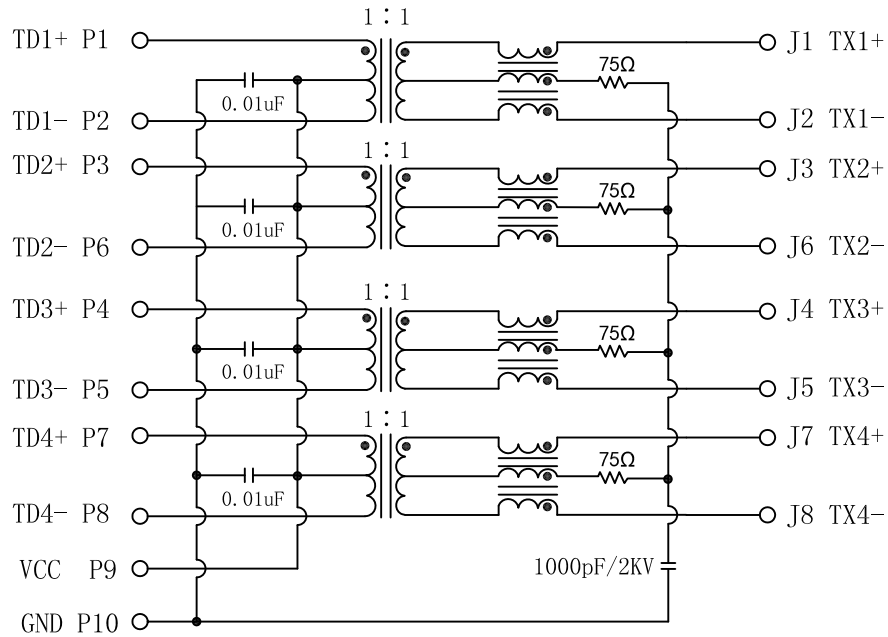


Schematic:

REV.	ECN NO.	DESCRIPTION	DATE	APPD
A	REL		2011/06/29	

PC BOARD CONNECTIONS



RJ45 CONNECTOR

Electrical Specifications @25°C

1. Impedance: 100 ohms
2. OCL: 350uH Min
@100KHz, 0.1V, 8mADC BIAS
3. Turns Ratio: 1 : 1 ±3%
4. Insertion Loss:
1-100MHz: -1.1dB Max
5. Return Loss (dB Min):
1-40MHz: -18 60MHz: -14
80MHz: -12 100MHz: -10
6. Crosstalk:
1-100MHz: -35dB Typ
7. Common Mode Rejection (dB Typ):
0.1-30MHz: -38 30-60MHz: -35
60-100MHz: -30
8. Isolation Voltage: 1500Vrms
9. Operating Temperature: 0°C ~ 70°C.



X:X ±0.30	APPD:	LINK-PP INT'L TECHNOLOGY CO., LIMITED		
X:XX ±0.25	CHKD:	TITLE: RJ45 Connector with 1000 BASE-TX Integrated Magnetic		
X:XXX ±0.05	DR: TOM	PART NO.: LPJGF26805CNL		
ANGLES ±1°	UNIT: mm			
	SCALE: 2/1	SHEET: 1/2	REV: A	DWG NO.: LP11062936

