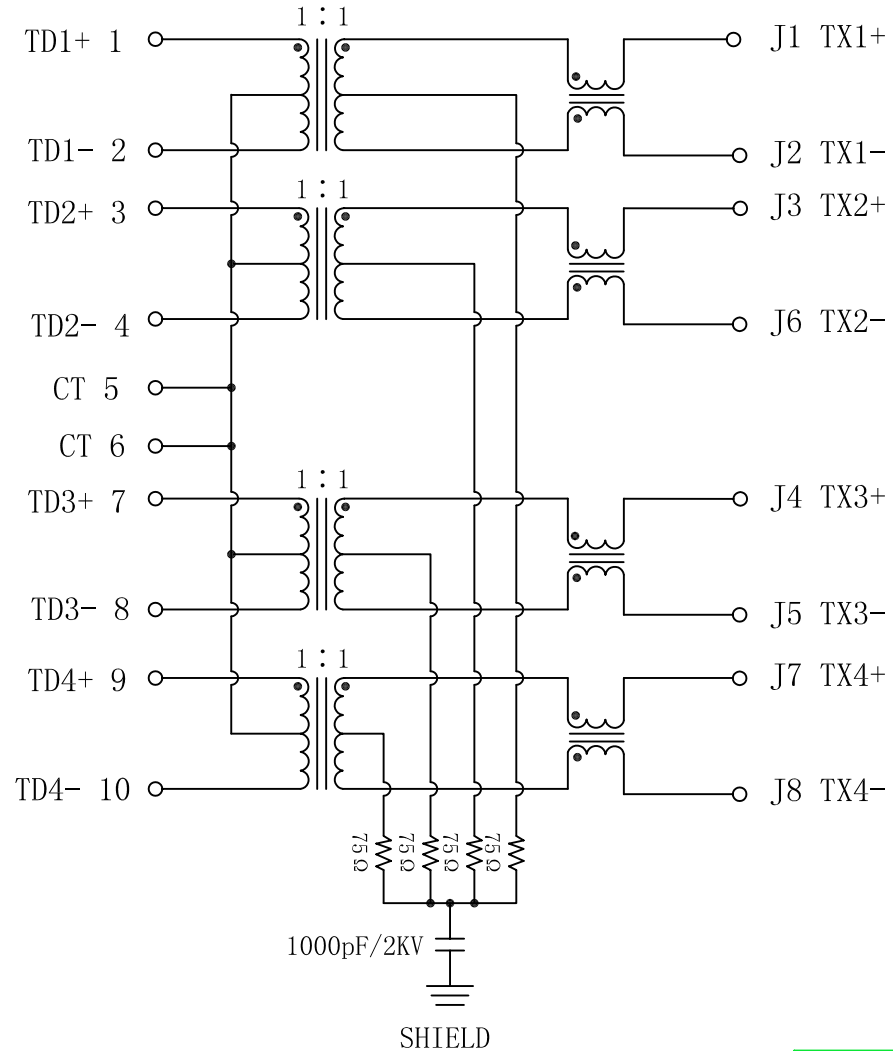


Schematic:

REV.	ECN NO.	DESCRIPTION	DATE	APPD
A	REL		22/08/2009	

PCB CONNECTIONS



RJ45 CONNECTOR

Electrical Specifications @25°C

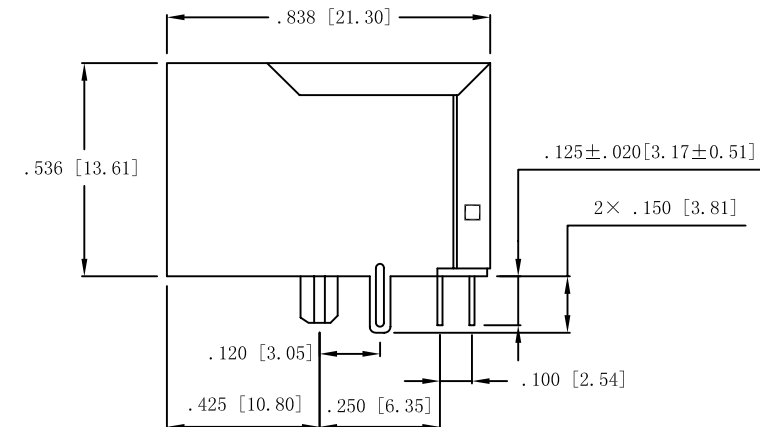
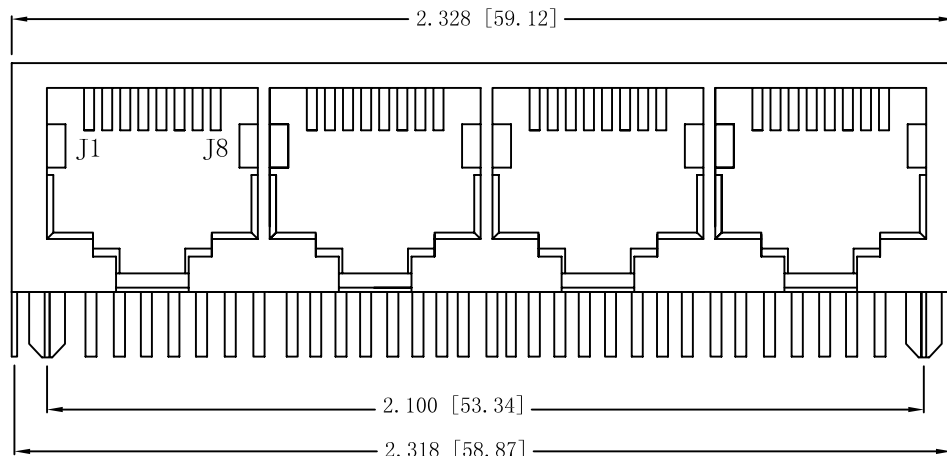
1. TURNS RATIO(±5%) :
TX=1CT:1CT RX=1CT:1CT
2. HI-POT: 1500Vrms
3. INSERTION LOSS:
-1.0dB MAX @ 1-100MHz
4. RETURN LOSS:
-16dB MIN @ 1-30MHz
-13.5dB MIN @ 30-40MHz
-11.5dB MIN @ 40-50MHz
-10dB MIN @ 50-80MHz
5. CROSS TALK:
-40dB MIN @ 0.3-30MHz
-35dB MIN @ 30-60MHz
-30dB MIN @ 60-100MHz
6. CMR:
-35dB MIN @ 1-30MHz
-32dB MIN @ 30-60MHz
-30dB MIN @ 60-125MHz
7. OCL: 350uH Min
@0.1MHz 0.1Vrms With 8mA DC Bias
8. OPERATING TEMPERATURE RANGE: 0°C to +70°C



X:X	±0.20	APPD:	LINK-PP INT'L TECHNOLOGY CO., LIMITED	
X:XX	±0.10	CHKD:	TITLE: RJ45 Connector With 1000 Base-TX Integrated Magnetic	
X:XXX	±0.05	DR: TOM	PART NO.: LPJG46801DNL	
ANGLES	±1°	UNIT: Inches/mm		
	SCALE: 2/1	SHEET: 2/2	REV: A	DWG NO.: LP09082202

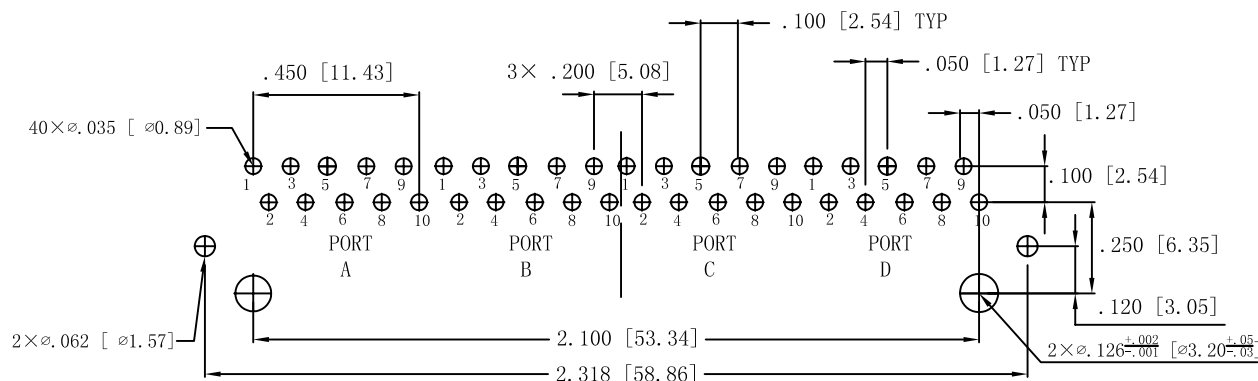
Mechanical:

REV.	ECN NO.	DESCRIPTION	DATE	APPD
A	REL		22/08/2009	



NOTES:

1. Designed to support application, such as SOHO (ADSL modems), LAN-on-Motherboard (LOM), hub and Switches.
2. Meets IEEE 802.3 specification
3. Connector Materials:
 Housing: Thermoplastic UL94V-0
 Contact/Shield: Copper alloy
 Shield plating: Nickel
 Contact plating: Gold 6 micro-inches min. In contact area.
4. Wave solder tip temperature: 265°C Max
 Wave solder tip temperature time: 5 Sec Max



SUGGESTED PCB LAYOUT (TOP VIEW)



X:X	±0.20	APPD:	LINK-PP INT'L TECHNOLOGY CO., LIMITED	
X:XX	±0.10	CHKD:	TITLE: RJ45 Connector With 1000 Base-TX Integrated Magnetic	
X:XXX	±0.05	DR: TOM	PART NO.: LPJG46801DNL	
ANGLES	±1°	UNIT: Inches/mm		
	SCALE: 2/1	SHEET: 2/2	REV: A	DWG NO.: LP09082202