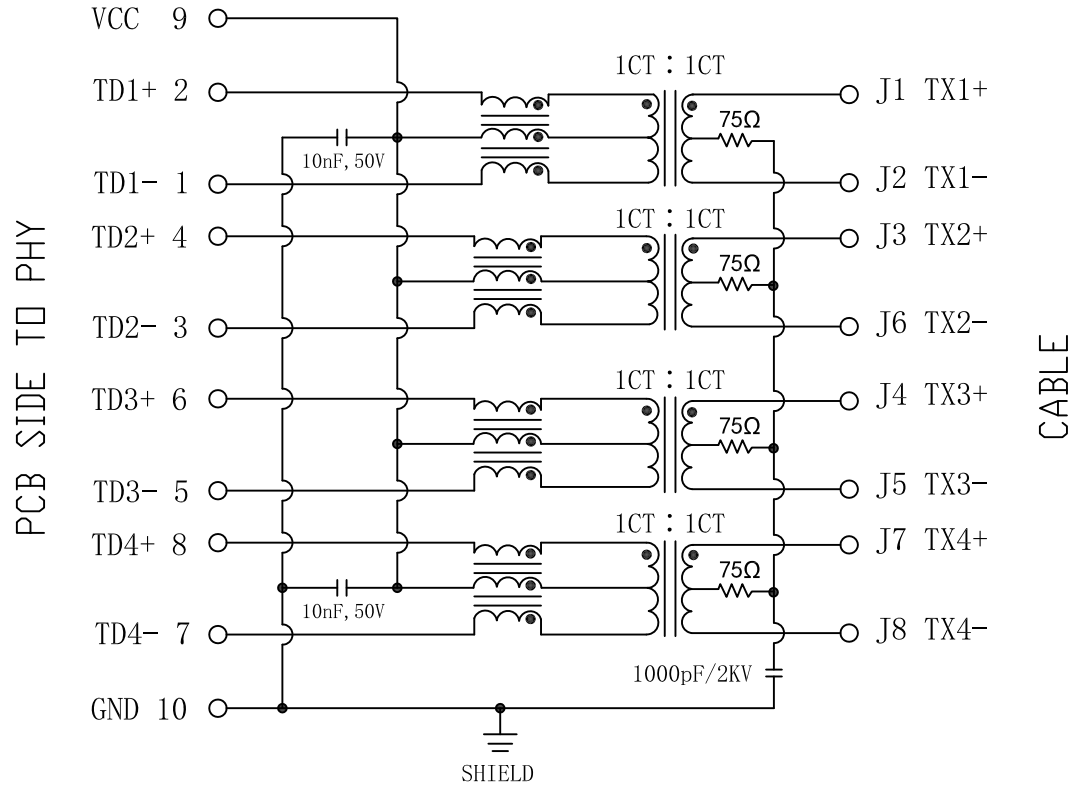
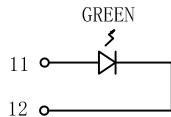


Schematic:



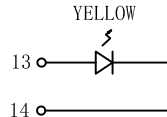
PCB SIDE TO PHY

CABLE



LEFT LED

LED POLARITY		COLOR
PIN 11	PIN 12	
+	-	GREEN



RIGHT LED

LED POLARITY		COLOR
PIN 13	PIN 14	
+	-	YELLOW



REV.	ECN NO.	DESCRIPTION	DATE	APPD
A	REL			

Electrical Specifications @25°C

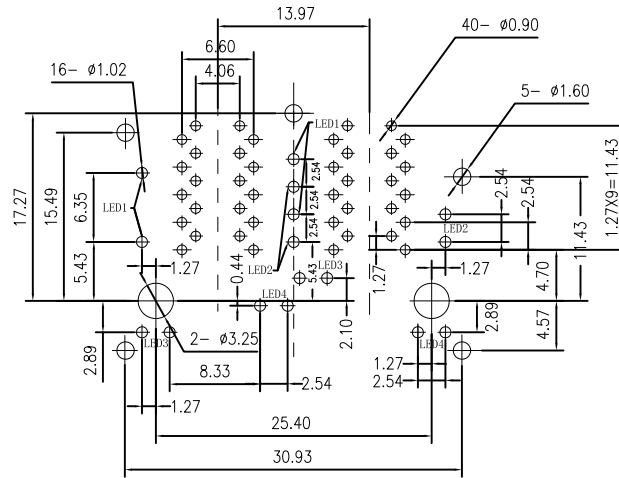
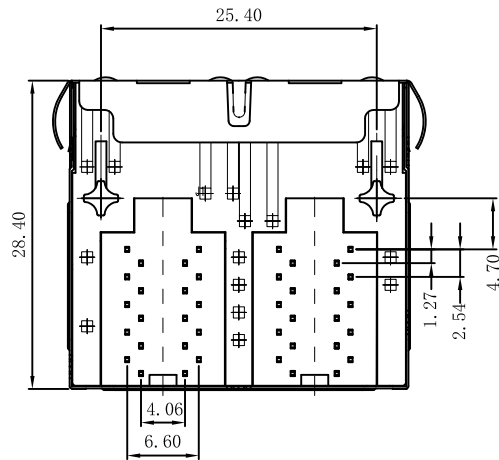
- Turns Ratio:
Pri : SeC = 1CT : 1CT ±2%
- OCL(@100KHz, 100mVrms, 8mA DC Bias):
350uH min
- Insertion Loss:
0.5~100MHz:-1.1dB Max
- Return Loss(dB Min):
0.5~40MHz:-18
40.1~100MHz:-12-20Log(f/80MHz)
- Crosstalk(dB Min):
0.5~40MHz:-35
40.1~100MHz:-33-20Log(f/50MHz)
- Common Mode Rejection Ratio(CMRR):
0.5~100MHz:-30dB Min
- Hi-Pot: 1500Vrms
- Operating Temperature: -40°C ~+85°C.

Emitting Color	λ p(nm)	VF@IF=20mA	IR @VR=5V
GREEN	565	1.8~2.6V	10 μ A max
YELLOW	585	1.8~2.6V	10 μ A max

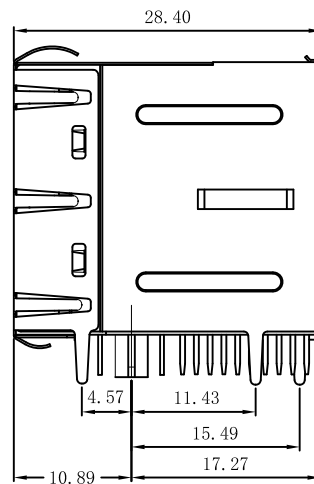
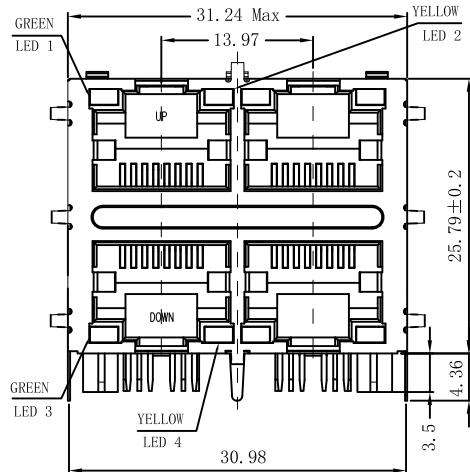
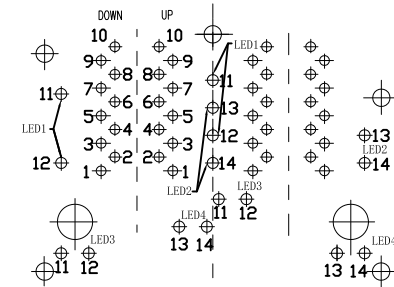
X:X	±0.30	APPD:	LINK-PP INT'L TECHNOLOGY CO., LIMITED
X:XX	±0.25	CHKD:	
X:XXX	±0.05	DR: TOM	TITLE: RJ45 .Transformer. 1000 Base-T W/LED. 2×2 Port
ANGLES	±1°	UNIT: mm	PART NO. : LPJG27020AENL
	SCALE: 2/1	SHEET: 1/2	REV: A
			DWG NO. : LP14042321

Mechanical :

REV.	ECN NO.	DESCRIPTION	DATE	APPD
A	REL		2013/08/05	



SUGGESTED PCB LAYOUT (TOP VIEW)



NOTES:

1. Designed to support application, such as SOHO (ADSL modems), LAN-on-Motherboard (LOM), hub and Switches.
2. Meets IEEE 802.3 specification
3. Connector Materials:
Housing: Thermoplastic UL94V-0
Contact/Shield: Copper alloy
Shield plating: Nickel
Contact plating: Gold 6 micro-inches min. In contact area.
4. Wave solder tip temperature: 265°C Max, 5 Sec.
5. UL Certification: File Number E484635.



X:X	±0.30	APPD:	LINK-PP INT'L TECHNOLOGY CO., LIMITED
X:XX	±0.25	CHKD:	
X:XXX	±0.05	DR: TOM	TITLE: RJ45 .Transformer. 1000 Base-T W/LED. 2×2 Port
ANGLES	±1°	UNIT: mm	PART NO. : LPJG27020AENL
	SCALE: 2/1	SHEET: 2/2	REV: A DWG NO. : LP14042321