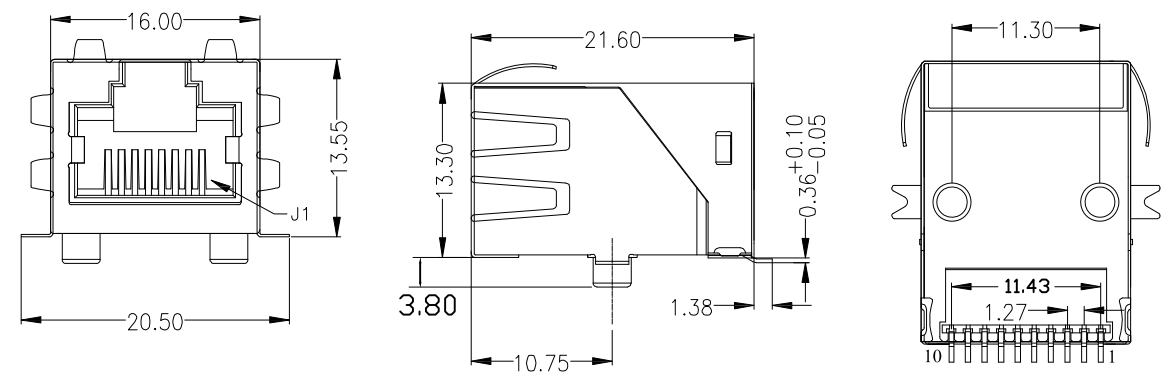


REVISION RECORD				
REV	ECO	DESCRIPTION	DRFT	CHKD
△		原始版本	PENGZ 13.5.6	

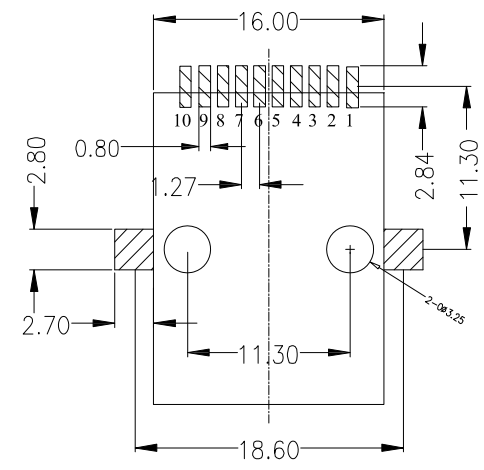
Feature:

- Complies with IEEE standards and all Gigabit specifications including 350uH with 8mA DC bias
- Intergrated Mag-modular design provides higher reliability and conserves minimizing PCB space
- Housing: Thermoplastic LCP
- Contact :Phosphor Bronze C5191,Thickness=0.35mm plated Nickel 30u" Min, Gold plated on content area 6u" Min
- Input Terminal : Brass ,Thickness=0.35mm
Finish : 120m' min Tin over 50m' min Nickel
- Metal shielding: Copper alloy with Nickel plated(C2680),
Thickness=0.20mm Ni 30u" Min
- Operating temperature: -40°C to +85°C



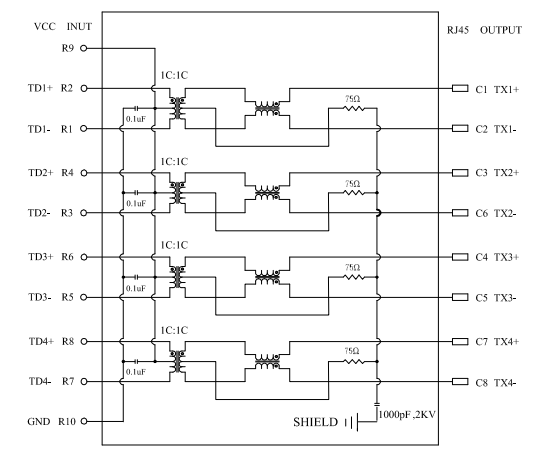
Electrical Specifications: (25°C)

1. Turns Ratio: @50KHz,0.1V: 1 : 1 ±5%	4. Common Mode Rejection: @1~100MHz: -30dB Min
2. Insertion Loss: @1~80MHz: -1.0dB Max @ 100MHz:-1.2dB Max	@200MHz: -20dB Min
3. Return Loss: @1~30MHz: -20dB Min @ 60~80MHz: -12dB Min	5. Crosstalk: @1~100MHz: -35dB Min
	6. OCL: @100KHz, 0.1V 8mADC : 350uH Min
	7. Hi-Pot: 1200V AC, 1mA, 1Sec



Suggested PCB Layout(Compone nt side view)

SCHEMATIC



Lead-free process,compliant RoHS

DETACHED LISTS	MM (INCH)		设计: TOM	日期 14.5.13	LINK-PP 连普国际科技有限公司 LINK-PP INT'L TECHNOLOGY CO.,LIMITED	系列	名称 RJ45 Connector	料号: LPJG19018CNL	A4 版本
	一般公差栏		审核: FRANK	日期 14.5.13					
	.0 ±	.0 ± 0.38	批准: LEO	日期 14.5.13					
	.00 ±	.00 ± 0.25	材料:						
	.000 ±	.000 ± 0.13	数量:						
	角度 ± 1.5°	表面处理:							
	第三角视图	比例: 1:1							
							不按比例		共 1 页 第 1 页