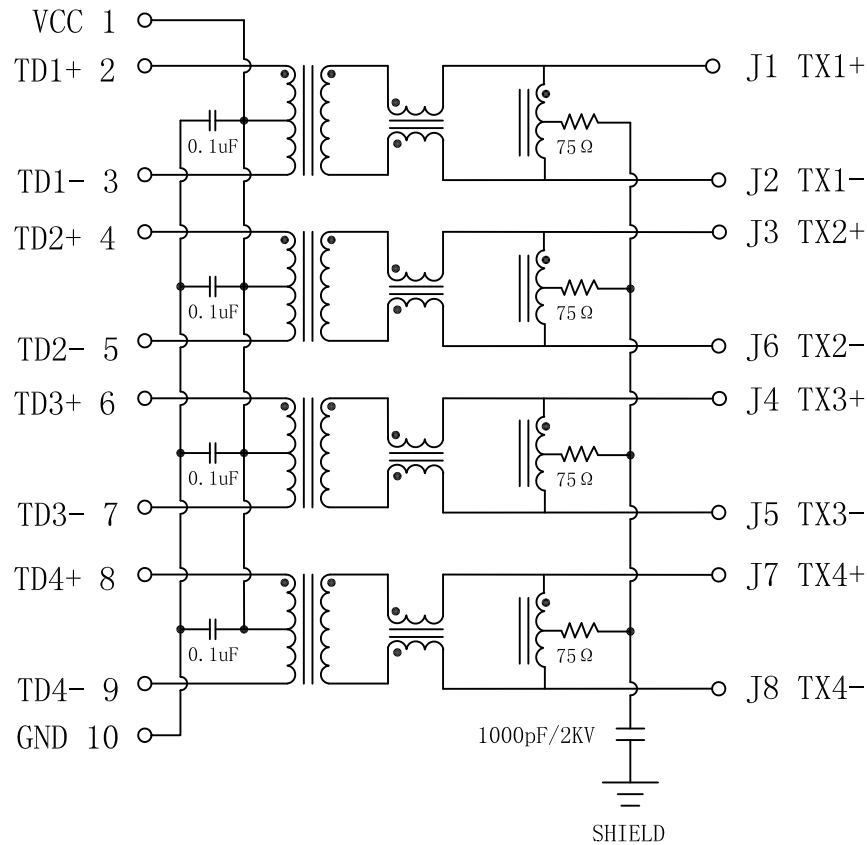


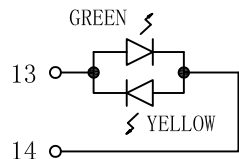
# Schematic :

REV.	ECN NO.	DESCRIPTION	DATE	APPD
A	REL		2010/05/21	



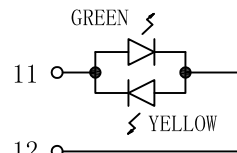
## Electrical Specification @25°C

1. Open Circuit Inductance (OCL):  
350uH Min @100KHz, 0.1Vrms, 8mA DC Bias
2. Turns Ratio (CHIP:CABLE):  
1:1 all four pairs
3. Insertion Loss:  
0.5-100MHz:-1.1dB Max
4. Return Loss:  
0.5-40MHz:-18dB Min  
40.1-100MHz:-12-20LOG(f/80) dB Min
5. Cross Talk:  
0.5-40MHz:-35dB Min  
40.1-100MHz:-33-20LOG(f/50) dB Min
6. Common Mode Rejection Ratio (CMRR):  
0.5-100MHz:-30dB Min
7. Isolation (@60Hz): 1500Vrms
8. Operating Temperature: 0°C ~ 70°C.



LEFT LED

LED POLARITY		COLOR
PIN 13	PIN 14	
+	-	GREEN
-	+	YELLOW



RIGHT LED

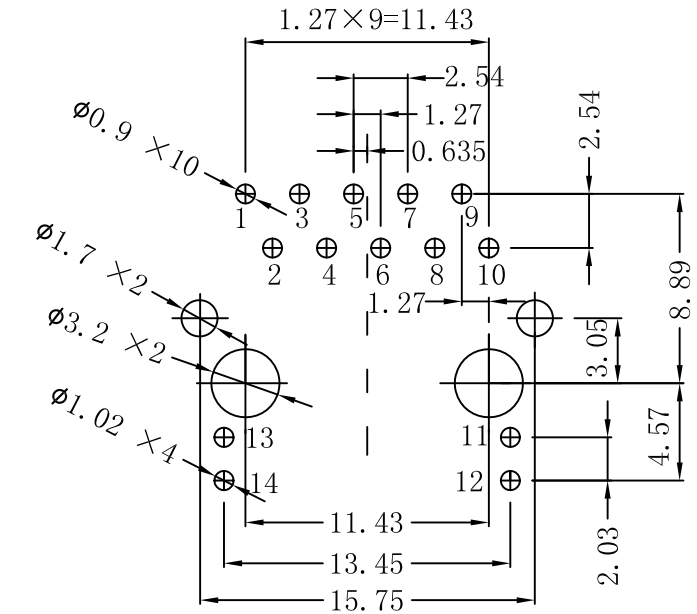
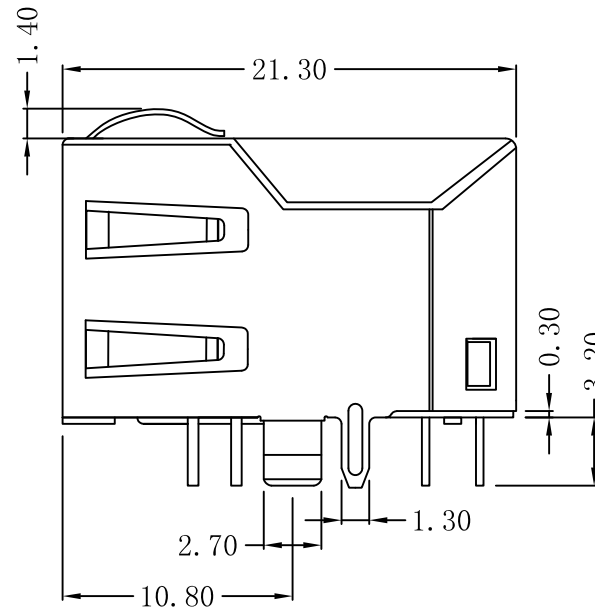
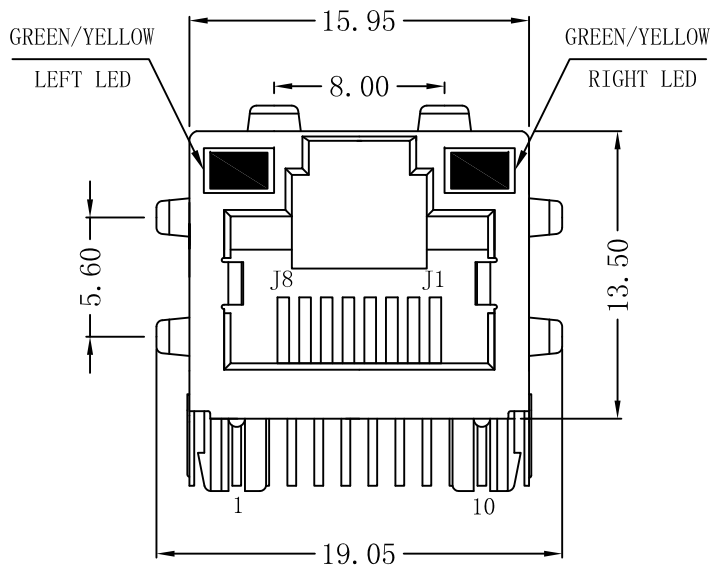
LED POLARITY		COLOR
PIN 11	PIN 12	
+	-	GREEN
-	+	YELLOW



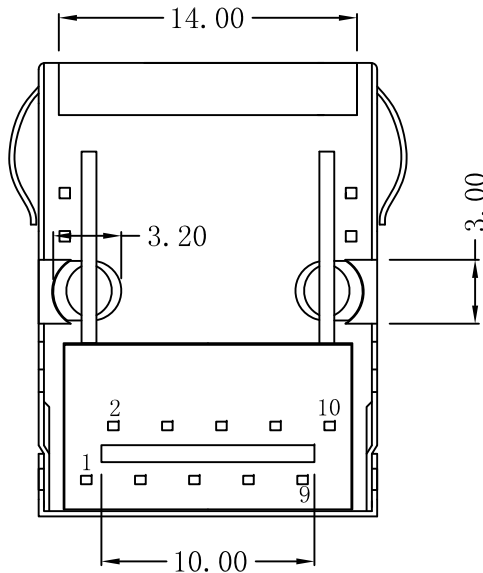
X:X	±0.20	APPD:	LINK-PP INT'L TECHNOLOGY CO., LIMITED	
X:XX	±0.10	CHKD:	TITLE: RJ45 Connector With 1000 Base-TX Integrated Magnetic	
X:XXX	±0.05	DR: TOM	PART NO.: LPJG16533A4NL	
ANGLES	±1°	UNIT: mm		
	SCALE: 2/1	SHEET: 1/2	REV: A	DWG NO.: LP10052109

# Mechanical:

REV.	ECN NO.	DESCRIPTION	DATE	APPD
A	REL		2010/05/21	



SUGGESTED PCB LAYOUT(TOP VIEW)



## NOTES:

1. Designed to support application, such as SOHO (ADSL modems), LAN-on-Motherboard (LOM), hub and Switches.
2. Meets IEEE 802.3 specification
3. Connector Materials:  
Housing: Thermoplastic UL94V-0  
Contact/Shield: Copper alloy  
Shield plating: Nickel  
Contact plating: Gold 6 micro-inches min. In contact area.
4. Wave solder tip temperature: 265°C Max  
Wave solder tip temperature time: 5 Sec Max



X:X	±0.20	APPD:	LINK-PP INT'L TECHNOLOGY CO., LIMITED	
X:XX	±0.10	CHKD:	TITLE: RJ45 Connector With 1000 Base-TX Integrated Magnetic	
X:XXX	±0.05	DR: TOM	PART NO.: LPJG16533A4NL	
ANGLES	±1°	UNIT: mm		
	SCALE: 2/1	SHEET: 2/2	REV: A	DWG NO.: LP10052109