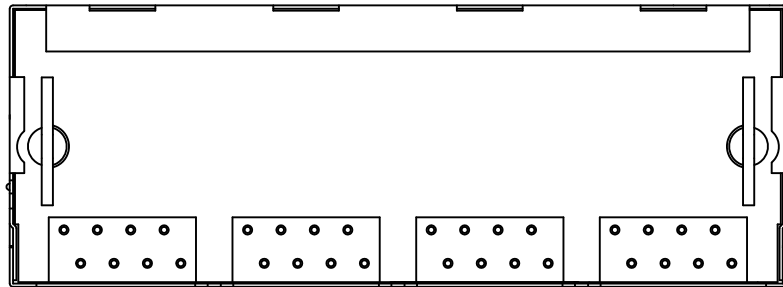
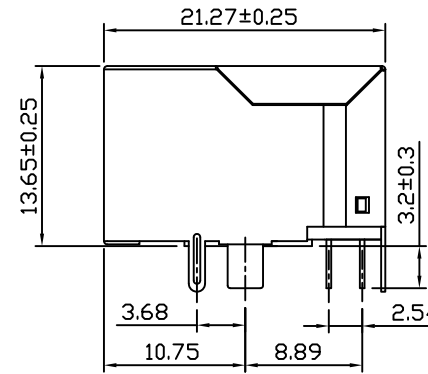
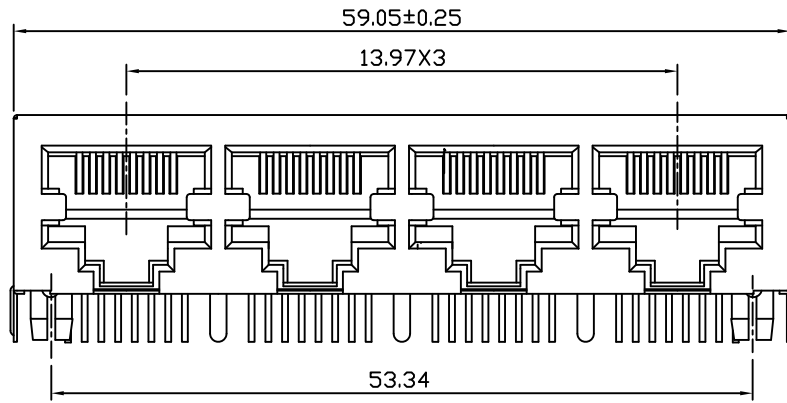


Mechanical:

REV.	ECN NO.	DESCRIPTION	DATE	APPD
A	REL		13/01/2010	



NOTES:
MATERIAL:

1. HOUSING MATERIAL: GLASS FILLED POLYESTER UL94V-0.
2. CONTACT MATERIAL: PHOSPHOR BRONZE $\phi 0.45$ mm.
3. PLATING: GOLD PLATING OVER NICKEL
4. SHIELD: 0.23mm THICKNESS COPPER ALLOY WITH NICKEL PLATED.

ELECTRICAL:

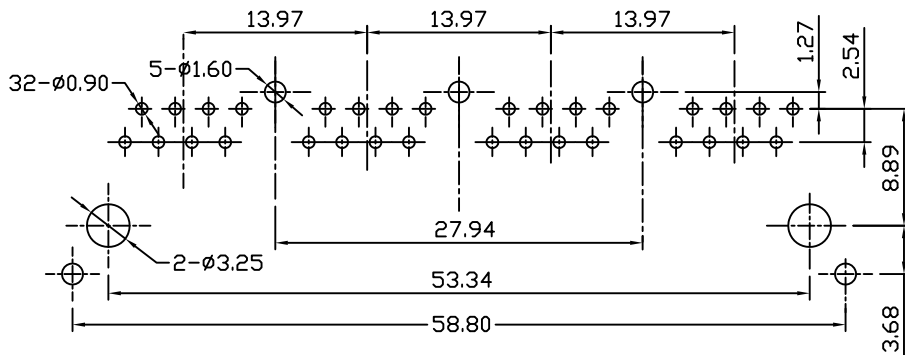
1. VOLTAGE RATING: 125VAC RMS.
2. CURRENT RATING: 1.5AMP.
3. CONTACT RESISTANCE: 30 MILLIOHMS MAX.
4. INSULATION RESISTANCE: 500MEG OHMS MIN @ 500V DC.
5. DIELECTRIC WITHSTANDING RESISTANCE: 1000V AC RMS 50Hz. 1MIN.

MECHANICAL:

1. DURRABILITY: 750 CYCLES MIN.
2. PCB RETENTION PRE-SOLDER: 1LB MIN.

ENVIRONMENTAL:

1. STORAGE: $-40^{\circ}\text{C} \sim +85^{\circ}\text{C}$.
2. OPERATION: $-40^{\circ}\text{C} \sim +85^{\circ}\text{C}$.
3. Wave solder temperature: 230°C to 250°C , 5~10 Sec.



PC Board Layout (Top View)

X:X	± 0.30	APPD:	LINK-PP INT'L TECHNOLOGY CO., LIMITED	
X:XX	± 0.25	CHKD:	TITLE: RJ45 1X4 CONNECTOR, BEFORE PLASTIC POST 3.68 mm	
X:XXX	± 0.05	DR: TOM	PART NO.: LPJEF123XDNL	
ANGLES	$\pm 1^{\circ}$	UNIT: mm	REV: A	
	SCALE: 2/1	SHEET: 1/1	REV: A	DWG NO.: LP10011309