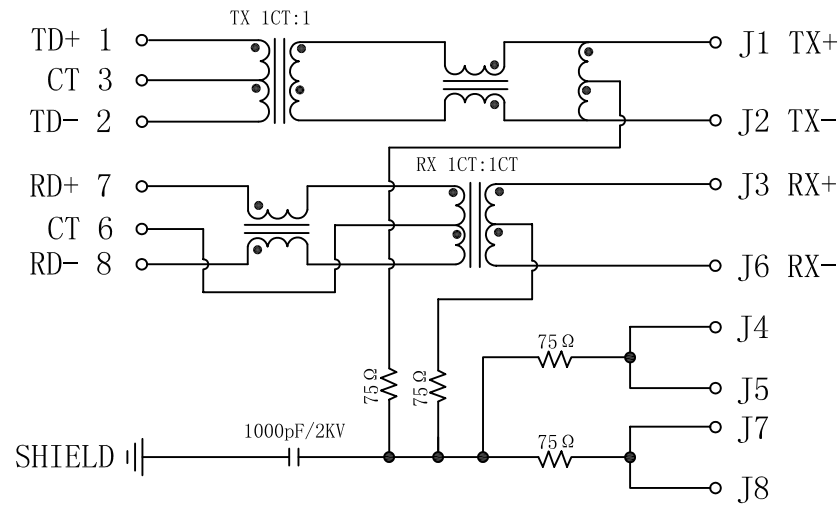


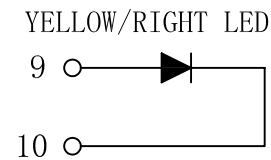
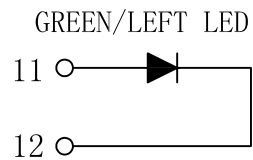
Schematic:

REV.	ECN NO.	DESCRIPTION	DATE	APPD
A	REL		2010/04/06	

PC BOARD CONNECTIONS



RJ45 CONNECTOR



ELECTRICAL SPECIFICATIONS @25°C

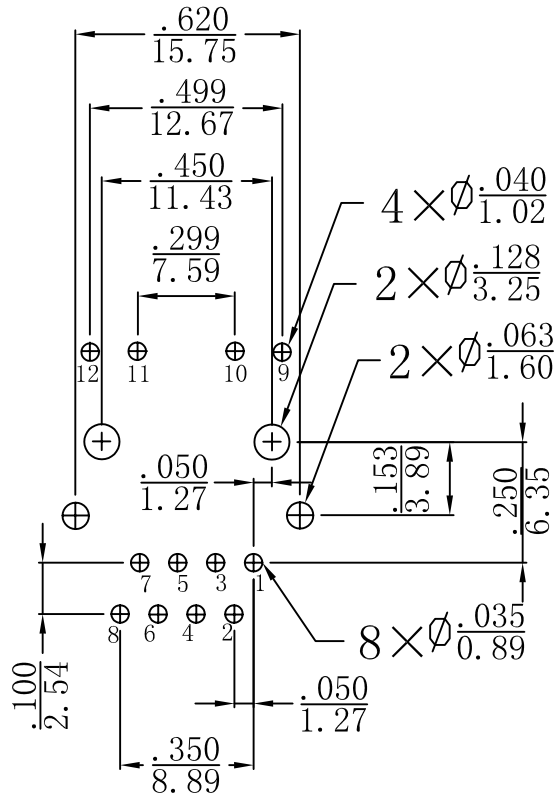
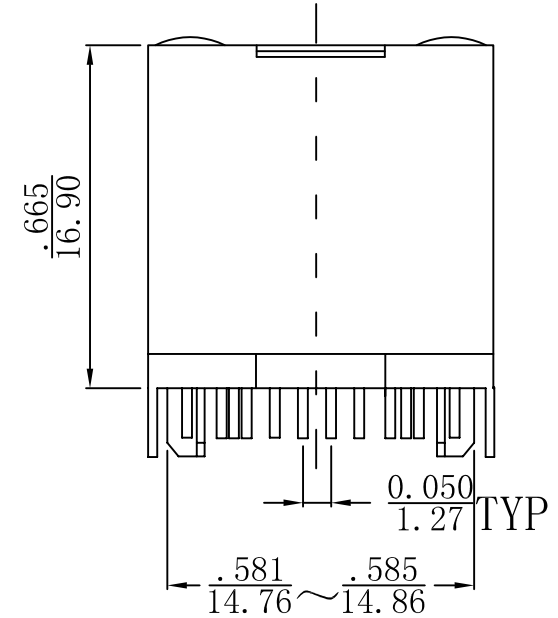
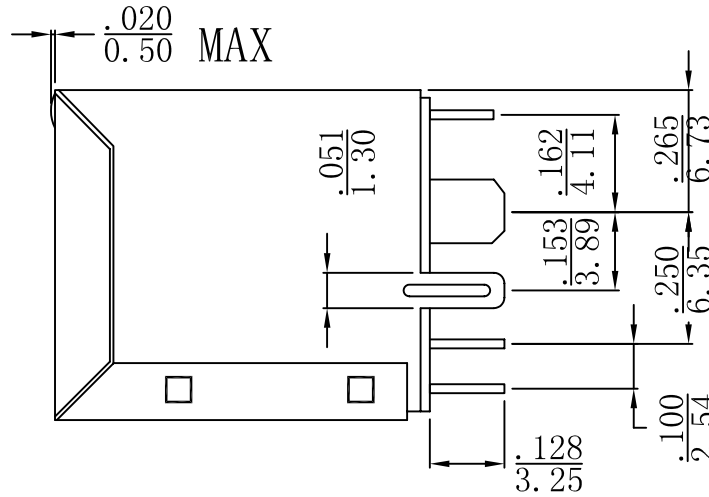
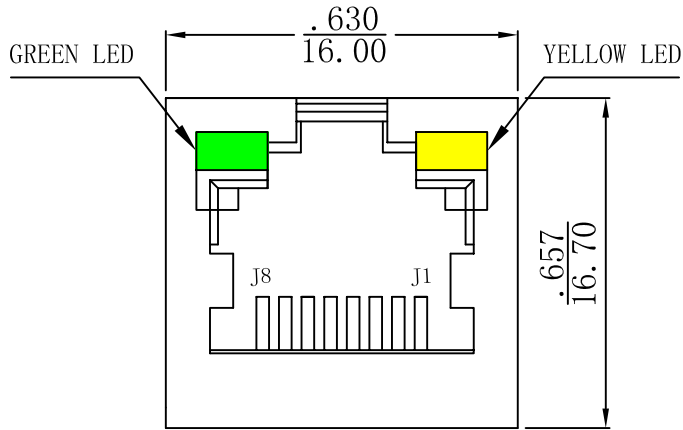
- Turn Ratio($\pm 2\%$):
TX=1CT:1 RX=1CT:1CT
- Inductance OCL: 350uH MIN
@100KHz/0.1V, 8mA DC Bias
- Insertion Loss:
-1.0dB MAX @ 0.3-100MHz
- Return Loss:
-18dB MIN @ 1-30MHz
-16dB MIN @ 40MHz
-14dB MIN @ 50MHz
-12dB MIN @ 60-80MHz
- Cross talk:
-45dB MIN @ 30MHz
-40dB MIN @ 60MHz
-35dB MIN @ 100MHz
- Common Mode Rejection:
-35dB MIN @ 30MHz
-30dB MIN @ 60MHz
-25dB MIN @ 100MHz
- Hipot: 1500Vrms
- Operating Temperature: 0°C TO 70°C



X:X	± 0.20	APPD:	LINK-PP INT'L TECHNOLOGY CO., LIMITED	
X:XX	± 0.10	CHKD:		
X:XXX	± 0.05	DR: TOM	Title: Vertical RJ45 Connector With 10/100 Magnetic	
ANGLES	$\pm 1^\circ$	UNIT: Inch/mm	PART NO.: LPJD0025BENL	
	SCALE: 2/1	SHEET: 1/2	REV: A	DWG NO.: LP10040608

Mechanical:

REV.	ECN NO.	DESCRIPTION	DATE	APPD
A	REL		2010/04/06	



SUGGESTED PCB LAYOUT (TOP VIEW)



NOTES:

1. Designed to support application, such as SOHO (ADSL modems), LAN-on-Motherboard (LOM), hub and Switches.
2. Meets IEEE 802.3 specification
3. Connector Materials:
Housing: Thermoplastic UL94V-0
Contact/Shield: Copper alloy
Shield plating: Nickel
Contact plating: Gold 6 micro-inches min. In contact area.
4. Wave solder tip temperature: 265°C Max
Wave solder tip temperature time: 5 Sec Max

X:X	±0.20	APPD:	LINK-PP INT'L TECHNOLOGY CO., LIMITED	
X:XX	±0.10	CHKD:	Title: Vertical RJ45 Connector With 10/100 Magnetic	
X:XXX	±0.05	DR: TOM	PART NO.: LPJD0025BENL	
ANGLES	±1°	UNIT: Inch/mm	PART NO.: LPJD0025BENL	
	SCALE: 2/1	SHEET: 2/2	REV: A	DWG NO.: LP10040608