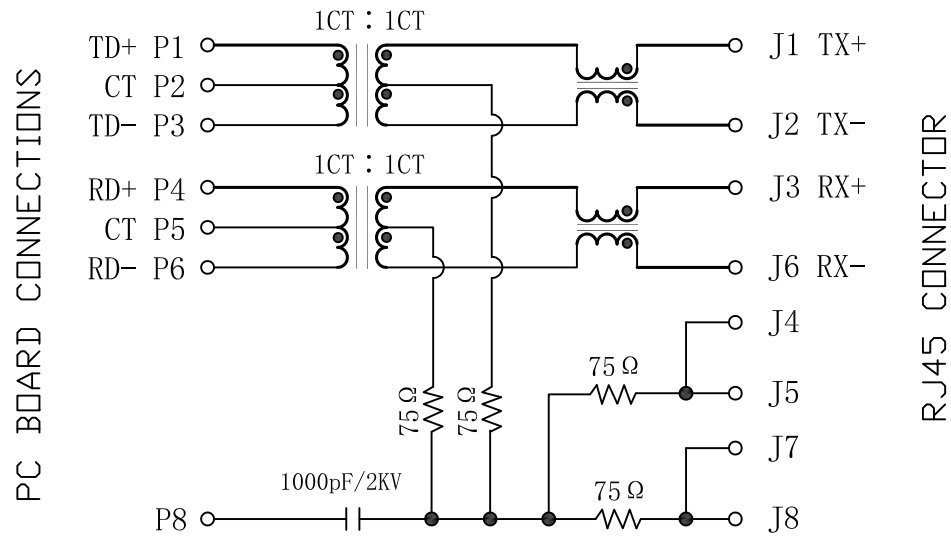


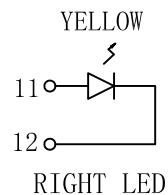
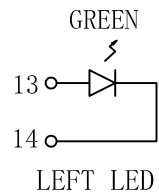
Schematic:



Electrical Specifications @25°C

- Turns Ratio(±5%):  
TX=1CT : 1CT      RX=1CT : 1CT
- Inductance: 350uH MIN  
@100KHz, 0.1V, 8mA DC Bias
- Insertion Loss:  
1-80MHz:    -1.0dB MAX  
100MHz:    -1.2dB MAX
- Return Loss:  
1-60MHz:    -14dB MIN  
60-100MHz: -10dB MIN
- Crosstalk:  
1-100MHz:   -35dB MIN
- Common Mode Rejection:  
1-100MHz:   -30dB TYP
- Hipot: 1500Vrms
- Operating Temperature: 0°C~70°C.

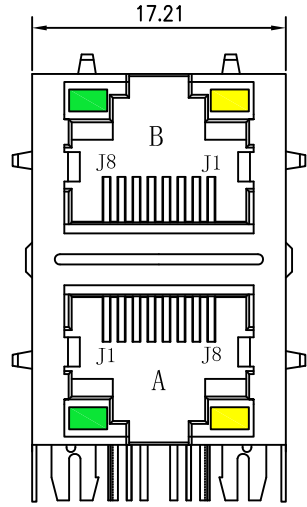
Emitting Color	$\lambda$ p(nm)	VF@IF=20mA	IR @VR=5V
GREEN	565	1.8~2.6V	10 $\mu$ A max
YELLOW	585	1.8~2.6V	10 $\mu$ A max



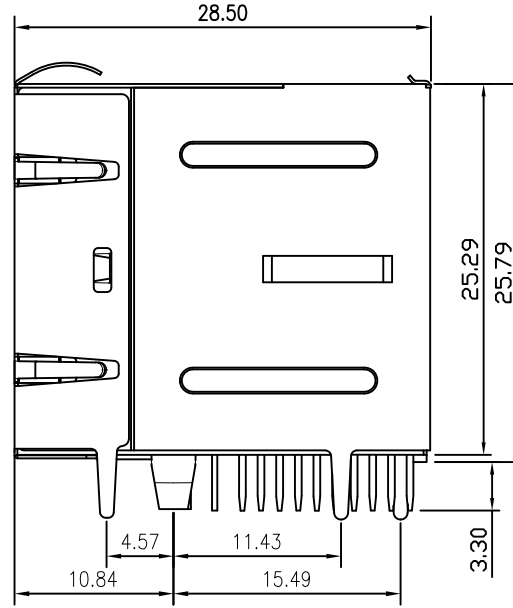
X:X	±0.30	APPD:	LINK-PP INT'L TECHNOLOGY CO., LIMITED	
X:XX	±0.25	CHKD:		
X:XXX	±0.05	DR: TOM	TITLE: 2*1 RJ45 Connector with 10/100 Base-T Integrated Magnetics	
ANGLES	±1°	UNIT: mm	PART NO. : LPJ17402AENL	
	SCALE: 2/1	SHEET: 1/2	REV: A	DWG NO. : LP14011129

# Mechanical:

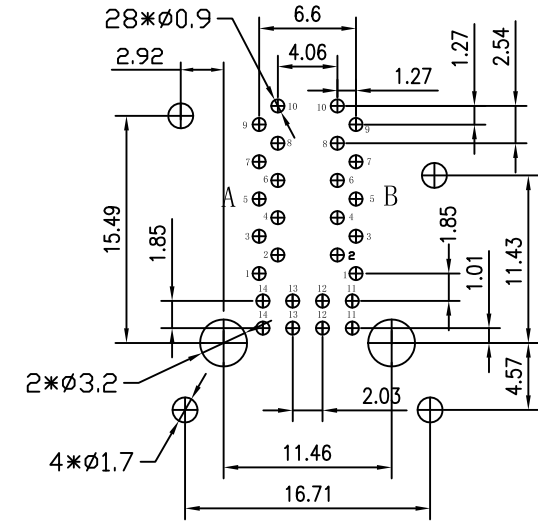
REV.	ECN NO.	DESCRIPTION	DATE	APPD
A	REL		2015-4-21	



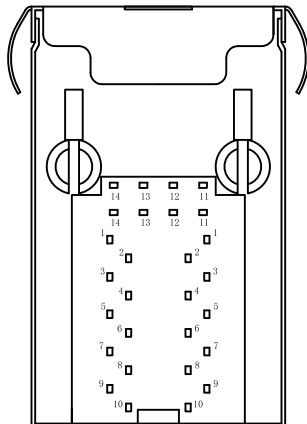
Front Side View



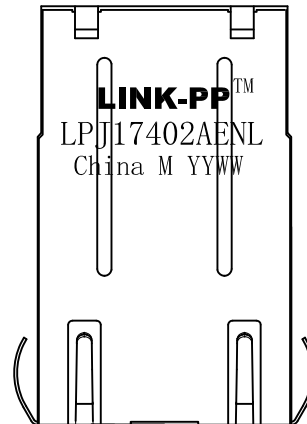
Left Side View



Suggested PCB Layout (Top View)



Bottom Side View



Top Side View

## NOTES:

1. Meets IEEE 802.3 specification
2. Connector Materials:
  - Housing Material: Thermoplastic PBT+30%G.F UL94V-0
  - Contact Material: Phosphor Bronze C5210R-EH Thickness=0.35mm
  - Pins: Brass C2680R-H Thickness=0.35mm
  - Shield: Copper alloy Brass H65Y Thickness=0.20mm
  - Shield plating: Nickel
  - Contact plating: Gold 6 micro-inches min. In contact area.
3. Wave solder tip temperature: 265°C Max, 5 Sec Max.
4. UL Certification: File Number E484635.

X:X ±0.30	APPD:	LINK-PP INT'L TECHNOLOGY CO., LIMITED		
X:XX ±0.25	CHKD:	TITLE: 2*1 RJ45 Connector with 10/100 Base-T Integrated Magnetics		
X:XXX ±0.05	DR: TOM	PART NO.: LPJ17402AENL		
ANGLES ±1°	UNIT: mm			
	SCALE: 2/1	SHEET: 2/2	REV: A	DWG NO.: LP14011129