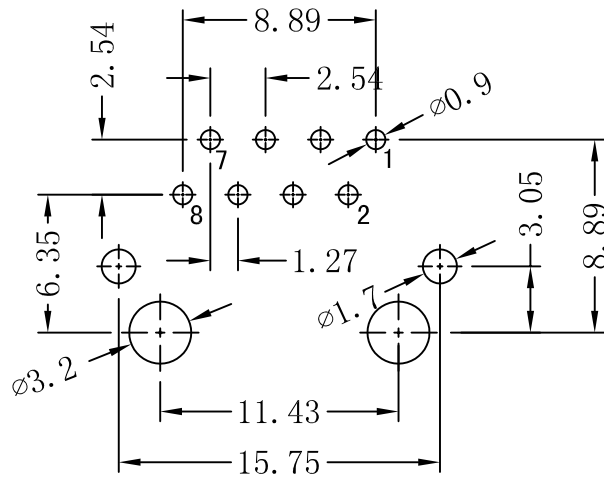
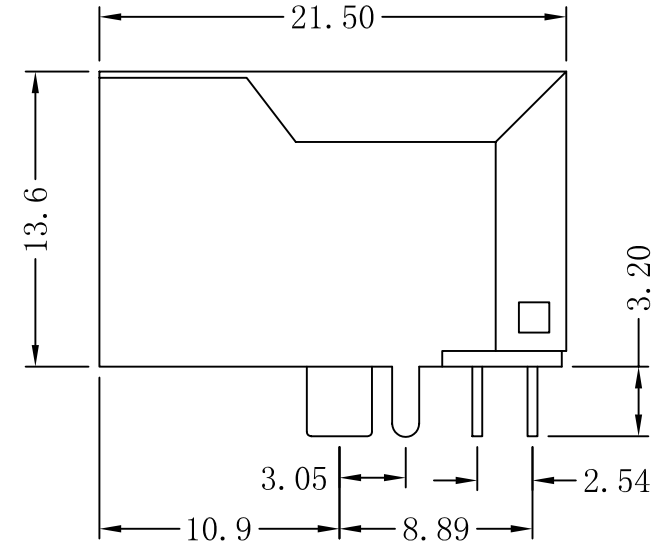
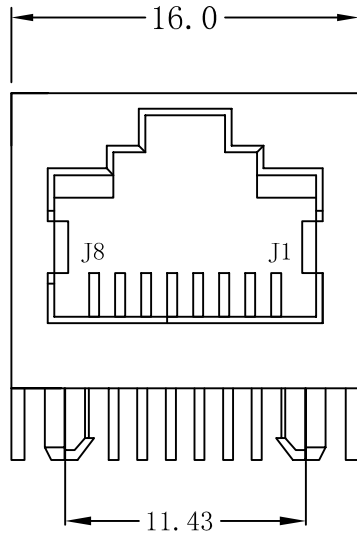


Mechanical:

REV.	ECN NO.	DESCRIPTION	DATE	APPD
A	REL		2010/05/22	



SUGGESTED PCB LAYOUT (TOP VIEW)



NOTES:

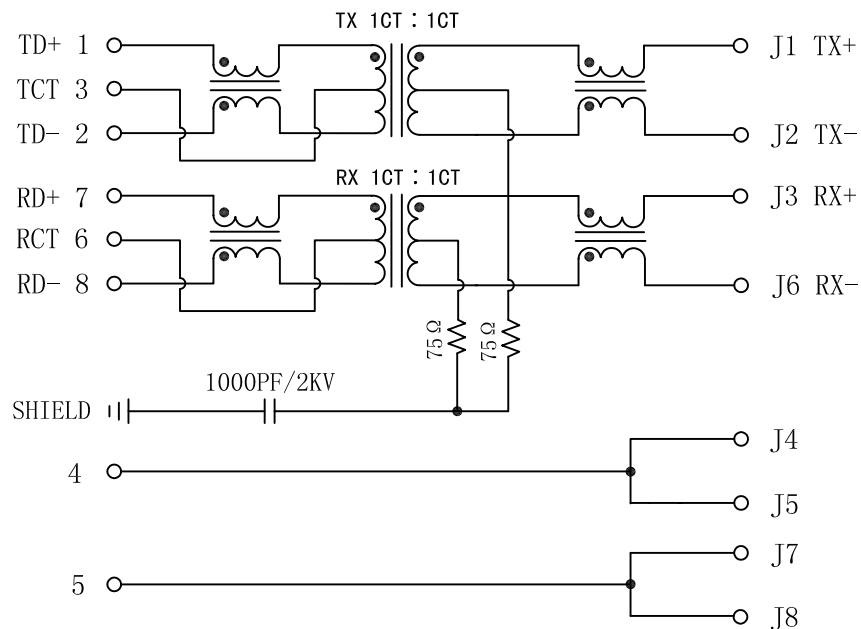
1. Designed to support application, such as SOHO (ADSL modems), LAN-on-Motherboard (LOM), hub and Switches.
2. Meets IEEE 802.3 specification
3. Connector Materials:
Housing: Thermoplastic UL94V-0
Contact/Shield: Copper alloy
Shield plating: Nickel
Contact plating: Gold 6 micro-inches min. In contact area.
4. Wave solder tip temperature: 265°C Max
Wave solder tip temperature time: 5 Sec Max
5. UL Certification: File Number E321120

X:X	±0.20	APPD:	LINK-PP INT'L TECHNOLOGY CO., LIMITED	
X:XX	±0.10	CHKD:	TITLE.: RJ45 Connector With 10/100 Base-TX Integrated Magnetic TAB-UP	
X:XXX	±0.05	DR: TOM	PART NO.: LPJ16222DNL	
ANGLES	±1°	UNIT: mm		
	SCALE: 2/1	SHEET: 1/2	REV: A	DWG NO: LP10052205

Schematic:

REV.	ECN NO.	DESCRIPTION	DATE	APPD
A	REL		2010/05/22	

PCB CONNECTIONS



Electrical Specifications @25°C

1. Transmitter filter & Receiver filter
Type: Balance low pass 100 Ω impedance
2. Turns Ratio:
TX=1CT:1CT RX=1CT:1CT
3. Inductance OCL: 350uH Min
@100KHz, 0.1Vrms, 8mA DC Bias.
4. Insertion Loss:
1-100MHz: -1.0dB Max;
5. Return Loss:
1-30MHz: -18dB Min. load 100 Ω
30-60MHz: -16dB Min. load 100 Ω
60-80MHz: -12dB Min. load 100 Ω
6. Crosstalk:
1-100MHz: -30dB Min
7. Common Mode Rejection :
1-100MHz:-30dB Min
8. Isolation Voltage:1500Vrms
9. Operating Temperature:0~70°C



X:X	±0.20	APPD:	LINK-PP INT'L TECHNOLOGY CO., LIMITED	
X:XX	±0.10	CHKD:	TITLE.: RJ45 Connector With 10/100 Base-TX Integrated Magnetic TAB-UP	
X:XXX	±0.05	DR: TOM	PART NO.: LPJ16222DNL	
ANGLES	±1°	UNIT: mm		
	SCALE: 2/1	SHEET: 2/2	REV: A	DWG NO: LP10052205