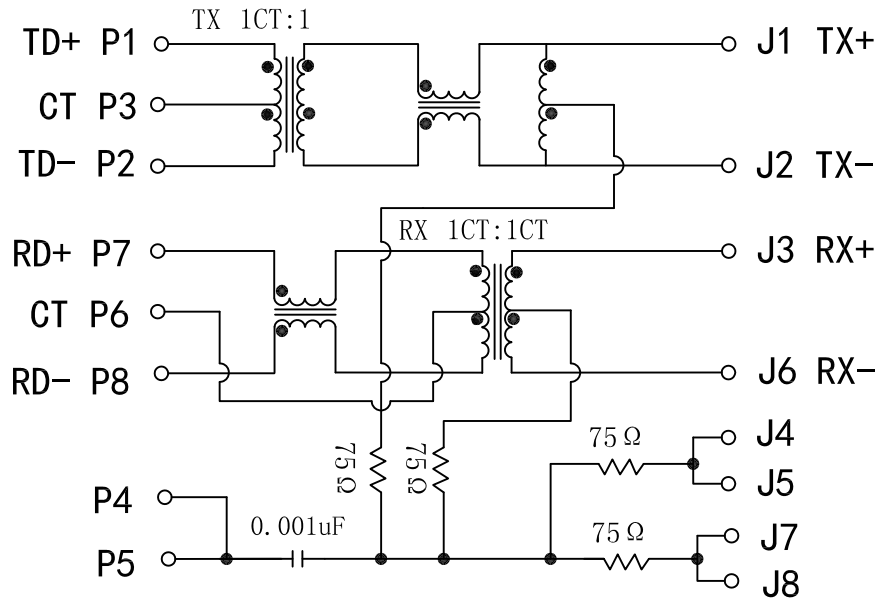


Schematic:

REV.	ECN NO.	DESCRIPTION	DATE	APPD
A	REL		2010/12/21	

PC BOARD CONNECTIONS

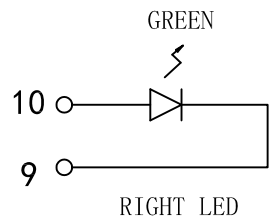
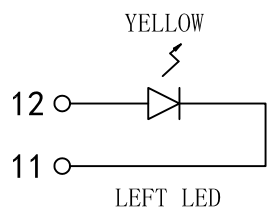


RJ45 CONNECTOR

Electrical Specification @25°C

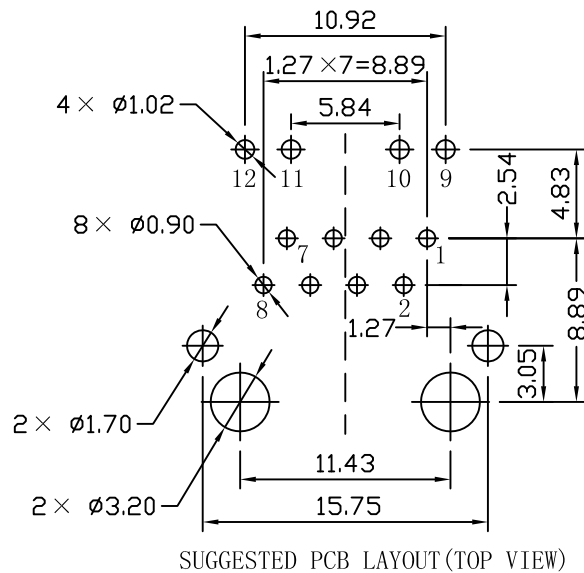
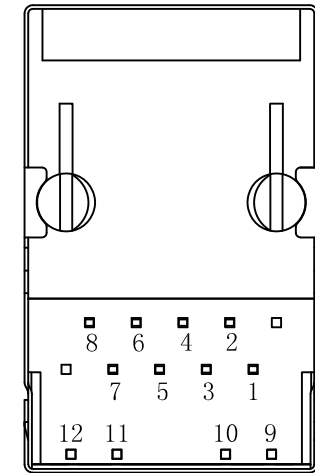
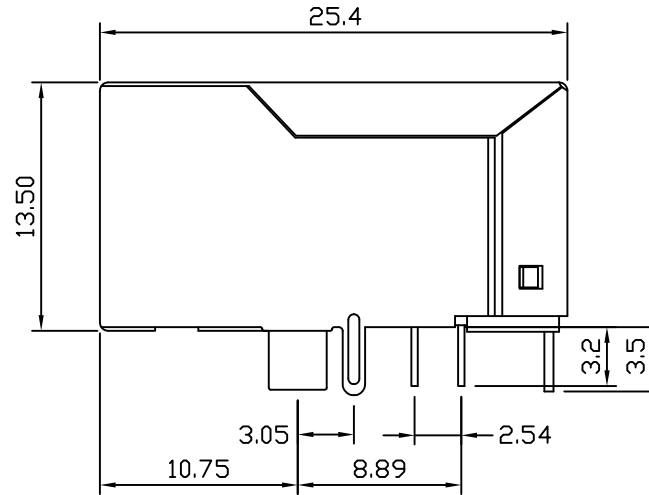
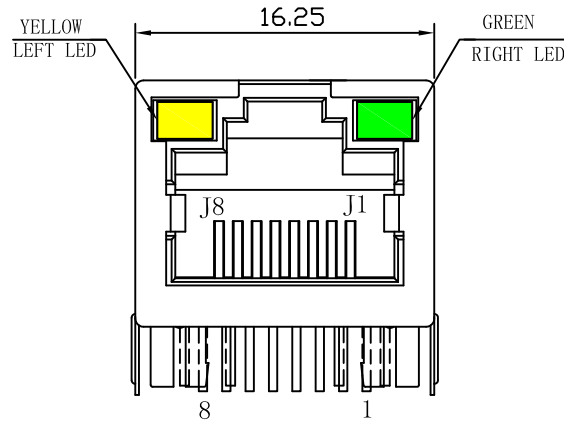
- Turns Ratio:  
TX=1CT:1                      RX=1CT:1CT
- Inductance: 350uH MIN  
@0.1V, 0.1MHz, 8mA DC Bias
- Cross talk (dB TYP):  
1-30MHz: -40                  30-60MHz: -35  
60-100MHz: -30
- Common Mode Rejection (dB TYP)  
1-50MHz: -30;                  50-150MHz: -20
- Return Loss (dB TYP @100Ω ± 15Ω):  
1-10MHz: -20;                  10-30MHz: -16  
30-60MHz: -12;                  60-100MHz: -10
- Insertion Loss:  
1-65MHz: -1.0dB TYP
- Hipot: 1500Vrms @60Hz
- Operating Temperature: 0°C ~ +70°C.

Emitting Color	λ p(nm)	VF@IF=20mA	IR @VR=5V
Green	570	1.8~2.6V	10 μ A max
Yellow	585	1.8~2.6V	10 μ A max



X:X ±0.30	APPD:	LINK-PP INT'L TECHNOLOGY CO., LIMITED
X:XX ±0.25	CHKD:	
X:XXX ±0.05	DR: TOM	TITLE: RJ45 Connector with 10/100 Base-T Integrated Magnetics
ANGLES ±1°	UNIT: mm	PART NO.: LPJ1026BGNL
	SCALE: 2/1	SHEET: 1/2
	REV: A	DWG NO.: LP10122112

REV.	ECN NO.	DESCRIPTION	DATE	APPD.
A	REL		2010/12/21	



SUGGESTED PCB LAYOUT (TOP VIEW)



NOTES:

1. Designed to support application, such as SOHO (ADSL modems), LAN-on-Motherboard (LOM), hub and Switches.
2. Meets IEEE 802.3 specification
3. Connector Materials:  
 Housing: Thermoplastic PBT+30%G.F UL94V-0  
 Contact: Phosphor Bronze C5210R-EH Thickness=0.35mm  
 Pins: Brass C2680R-H Thickness=0.35mm  
 Shield: SUS 201-1/2H Thickness=0.2mm  
 Contact plating: Gold 6 micro-inches min. In contact area.
4. Wave solder tip temperature: 265°C Max  
 Wave solder tip temperature time: 5 Sec Max

X:X ±0.30	APPD:	LINK-PP INT'L TECHNOLOGY CO., LIMITED
X:XX ±0.25	CHKD:	
X:XXX ±0.05	DR: TOM	TITLE: RJ45 Connector with 10/100 Base-T Integrated Magnetics
ANGLES ±1°	UNIT: mm	PART NO.: LPJ1026BGNL
	SCALE: 2/1	SHEET: 2/2
	REV: A	DWG NO.: LP10122112