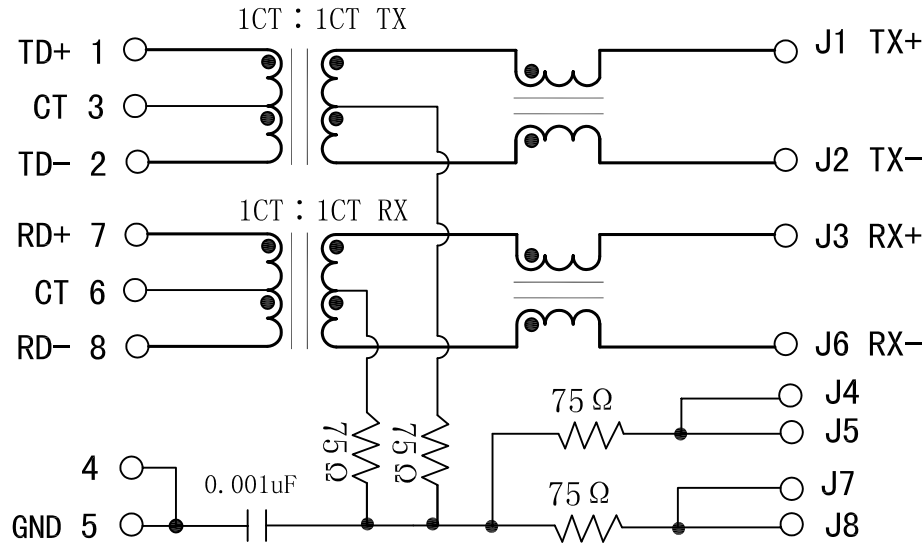


# Schematic:

REV.	ECN NO.	DESCRIPTION	DATE	APPD
A	REL		10/05/2008	

PC BOARD CONNECTIONS



RJ45 CONNECTOR

## Electrical Specification:

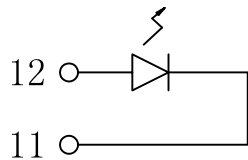
TEST NOTES (25 ± 5°C)

- TR: (100KHz, 0.1V);  
TX=1CT : 1CT ± 3%    RX=1CT : 1CT ± 3%
- LX: (100KHz, 100mV, 8mA, DC Bias)  
PINS: (P1, P2), (P7, P8)=350uH MIN
- HIPOT:  
PINS (P1, P3, P2) TO (J1, J2)=1500VAC FOR 60 SECONDS  
PINS (P7, P6, P8) TO (J3, J6)=1500VAC FOR 60 SECONDS
- INSERTION LOSS:  
-1.0dB MAX @ 1.0MHz TO 65MHz
- RETURN LOSS:  
-20dB MIN @ 1MHz TO 10MHz  
-16dB MIN @ 10MHz TO 30MHz  
-12dB MIN @ 30MHz TO 60MHz  
-10dB MIN @ 60MHz TO 100MHz
- CROSS TALK:  
-40dB MIN @ 1MHz TO 30MHz  
-35dB MIN @ 30MHz TO 60MHz  
-30dB MIN @ 60MHz TO 100MHz
- COMMON TO COMMON MODE REJECTION:  
-30dB MIN @ 1MHz TO 50MHz  
-20dB MIN @ 50MHz TO 150MHz
- OPERATING TEMPERATURE: 0°C ~ 70°C.

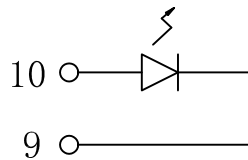
## RJ45 Durability Testing Rating

Part Number	Mating Force (MAX)	Unmating Force (MAX)	Durability	Plug to Jack Retention (MIN)
LPJ1011BHNL	5 lbs./2.268kgs	5 lbs./2.268kgs	750 Insertions	20 lbs./9.072kgs

GREEN/LEFT LED



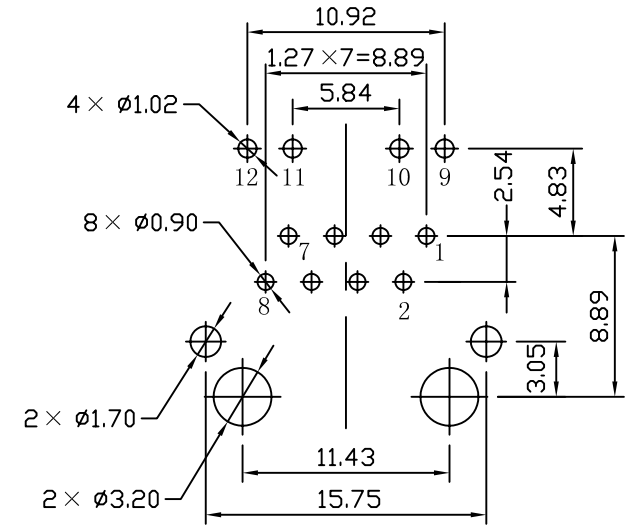
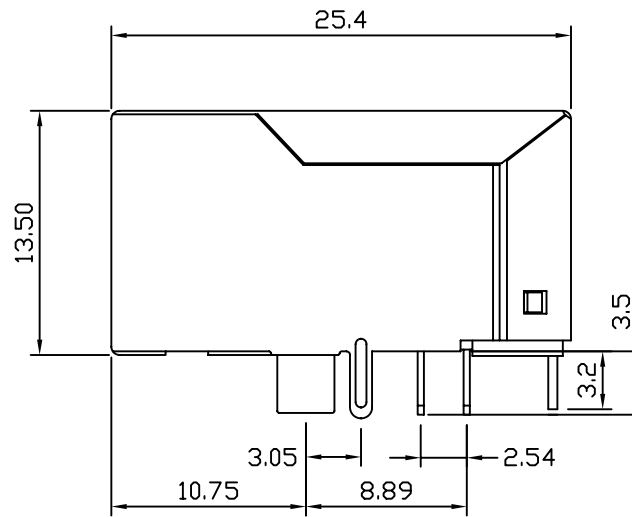
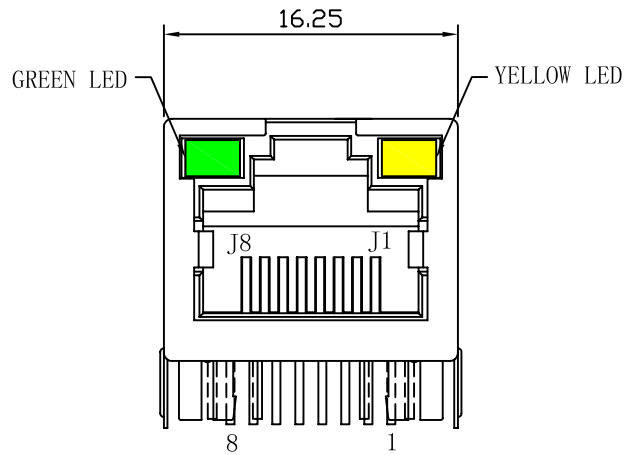
YELLOW/RIGHT LED



X:X	±0.20	APPD:	LINK-PP INT'L TECHNOLOGY CO., LIMITED	
X:XX	±0.10	CHKD:		
X:XXX	±0.05	DR: TOM		
ANGLES	±1°	UNIT: mm	PART NO.: LPJ1011BHNL	
	SCALE: 2/1	SHEET: 1/2	REV: A	DWG NO.:

# Mechanical :

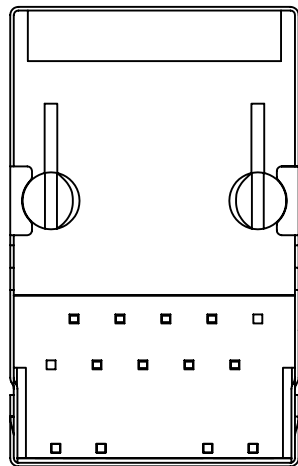
REV.	ECN NO.	DESCRIPTION	DATE	APPD
A	REL		10/05/2008	



SUGGESTED PCB LAYOUT (TOP VIEW)

## NOTES:

1. Designed to support application, such as SOHO (ADSL modems), LAN-on-Motherboard (LOM), hub and Switches.
2. Meets IEEE 802.3 specification
3. Connector Materials:  
 Housing: Thermoplastic UL94V-0  
 Contact/Shield: Copper alloy  
 Shield plating: Nickel  
 Contact plating: Gold 6 micro-inches min. In contact area.
4. Wave solder tip temperature: 260°C  
 Wave solder tip temperature time: 5 Sec Max



X:X	±0.20	APPD:	LINK-PP INT'L TECHNOLOGY CO., LIMITED	
X:XX	±0.10	CHKD:	Title: RJ45 Connector With 10/100 Base-TX Integrated Magnetic	
X:XXX	±0.05	DR: TOM	PART NO.: LPJ1011BHNL	
ANGLES	±1°	UNIT: mm		
	SCALE: 2/1	SHEET: 2/2	REV: A	DWG NO.: