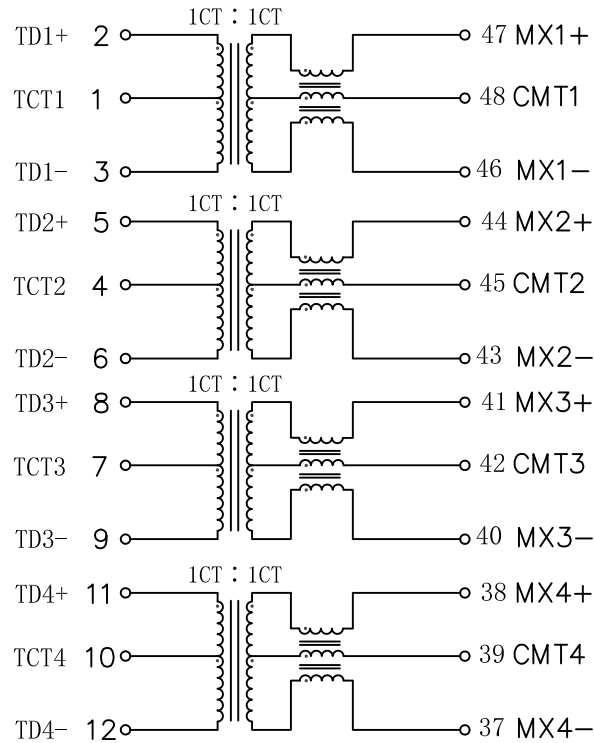


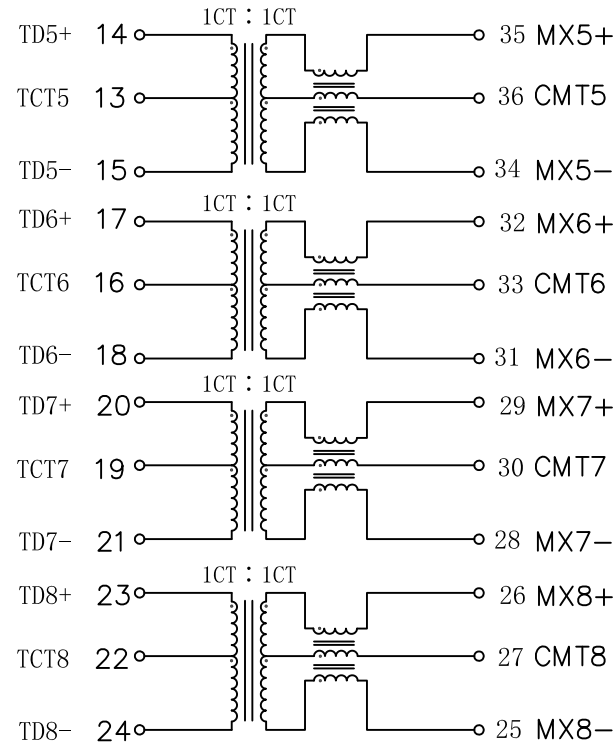
# Schematic:

REV.	ECN NO.	DESCRIPTION	DATE	APPD
A	REL		2020/01/30	

## Port 1



## Port 2



### Electrical Specification @25°C

1. OCL: 350uH Min  
@100KHz, 0.1V, 8mADC Bias
2. Turns Ratio(±5%):  
Pri:Sec = 1CT:1CT
3. Insertion Loss:  
0.5-100MHz:-1.1dB Max
4. Return Loss(dB Min):  
0.5-40MHz:-18  
40.1-100MHz:-12+20\*log(f/80)
5. Crosstalk(dB Min):  
0.5-40MHz:-35  
40.1-100MHz:-33+20\*log(f/50)
6. CMRR(dB Min):  
0.5-100MHz:-30
7. Hipot: 1500Vrms
8. Operating Temperature: -40°C ~ +85°C.

Dimensions: mm

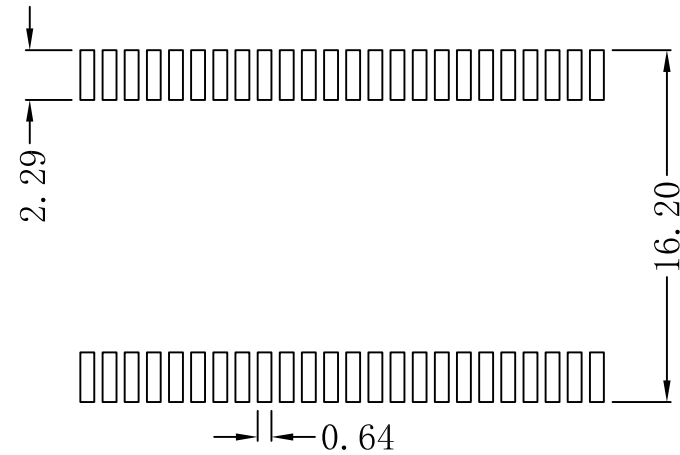
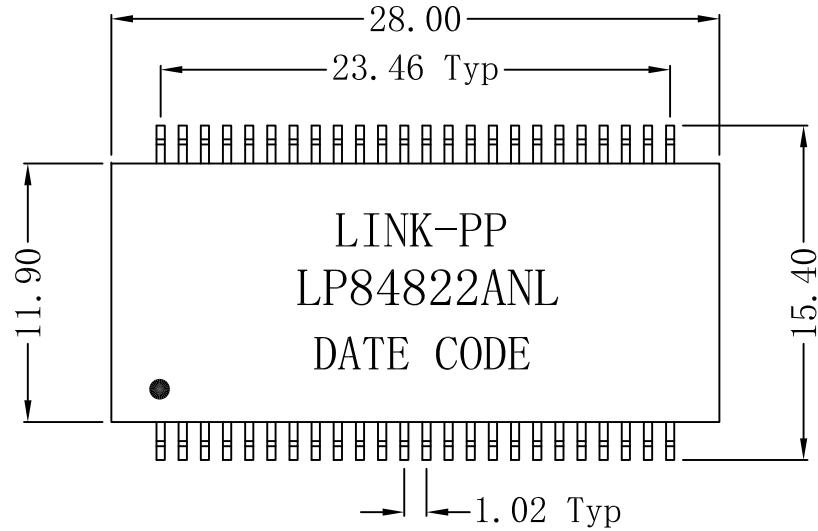
Unless otherwise specified, all tolerances are ±0.25



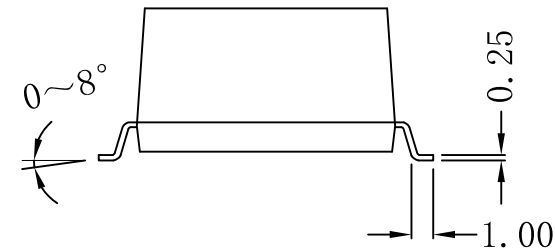
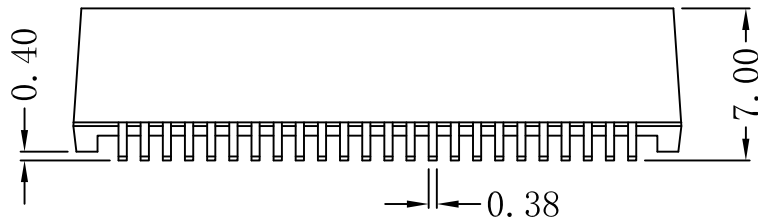
X:X	APPD:	LINK-PP INT'L TECHNOLOGY CO., LIMITED		
X:XX ±0.25	CHKD:	TITLE: 1000Base-T Magnetic Modules For PoE+ Application		
X:XXX	DR: TOM	PART NO.: LP84822ANL		
ANGLES ±1°	UNIT: mm			
	SCALE: 2/1	SHEET: 1/2	REV: A	DWG NO.: LP20013001

**Mechanical:**

REV.	ECN NO.	DESCRIPTION	DATE	APPD
A	REL		2020/01/30	



SUGGESTED PAD LAYOUT



**NOTES:**

1. Designed to support application, such as SOHO (ADSL modems), LAN-on-Motherboard (LOM), hub and Switches.
2. Support 750mA current capability while used as PoE+ enabled, and comply with IEEE802.3at standard.
3. With various Turns Ratios.
4. Maximum reflow temperature is 250°C, 5 Sec.
5. UL Certification: File Number E3484635.

Dimensions: mm

Unless otherwise specified, all tolerances are  $\pm 0.25$

X:X	APPD:	LINK-PP INT'L TECHNOLOGY CO., LIMITED		
X:XX $\pm 0.25$	CHKD:	TITLE: 1000Base-T Magnetic Modules For PoE+ Application		
X:XXX	DR: TOM	PART NO.: LP84822ANL		
ANGLES $\pm 1^\circ$	UNIT: mm			
	SCALE: 2/1	SHEET: 2/2	REV: A	DWG NO.: LP20013001