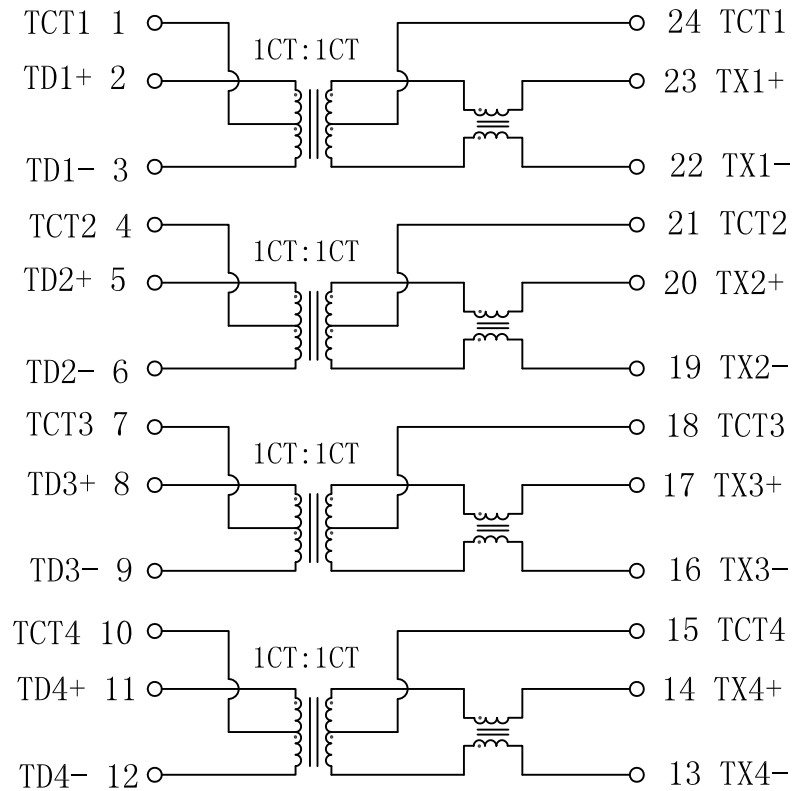


Schematic:

REV.	ECN NO.	DESCRIPTION	DATE	APPD
A	REL		2013/07/24	



Electrical Specifications @25°C

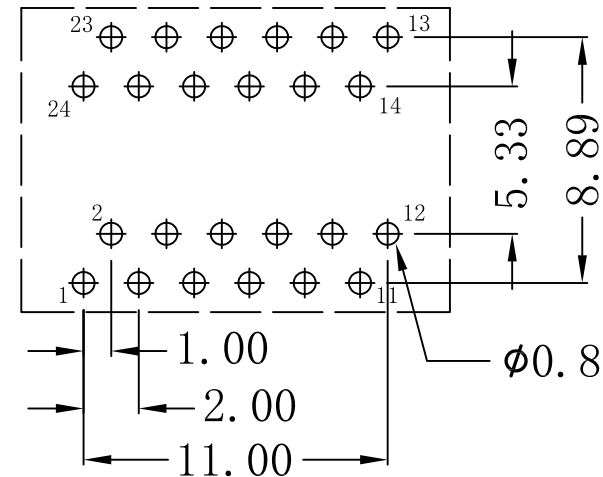
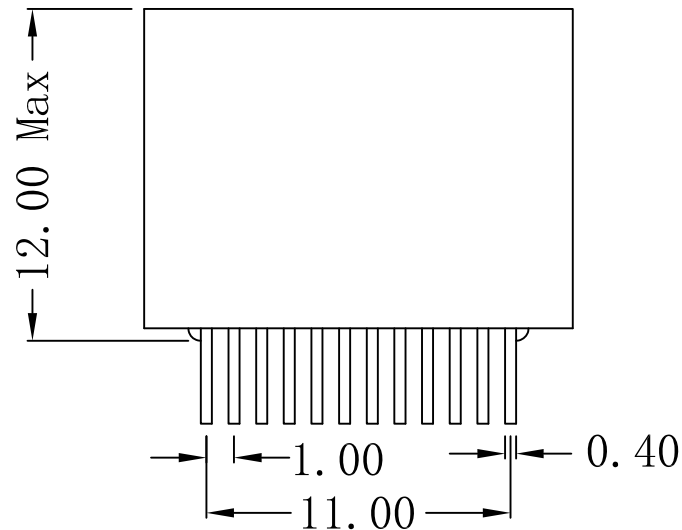
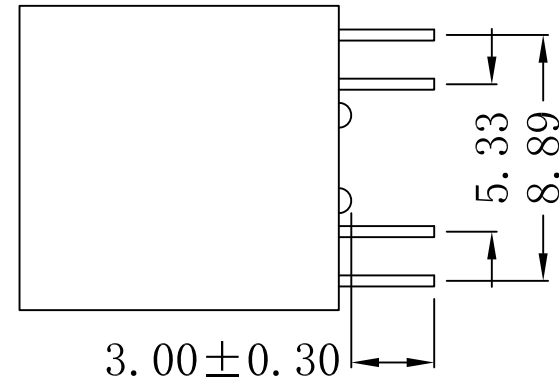
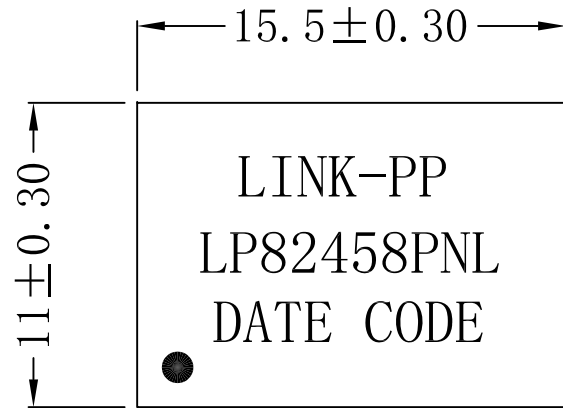
- Turns Ratio ($\pm 5\%$):
Pri : Sec = 1CT : 1CT
- OCL: 350uH Min
@100KHz, 200mV, 8mA DC Bias
- LL: 0.5uH Max @100KHz, 200mV
- Cw/w: 25pF Typ @100KHz, 200mV
- DCR: 0.9 Ω Max
- Insertion Loss:
1-100MHz: -1.0 dB MAX
- Return Loss (dB MIN):
1-30MHz: -18 40MHz: -14.4
50MHz: -13.1 60-80MHz: -12
- Crosstalk (dB MIN):
30MHz: -42 60-100MHz: -35
- Common Mode Rejection (dB MIN):
30MHz: -40 60MHz: -35
100MHz: -30
- Hipot: 1500Vrms
- Operating Temperature: 0°C ~ 70°C.



X:X	± 0.30	APPD:	LINK-PP INT'L TECHNOLOGY CO., LIMITED	
X:XX	± 0.25	CHKD:	TITLE: 100/1000BASE-TX TRANSFORMER	
X:XXX	± 0.05	DR: TOM	PART NO.: LP82458PNL	
ANGLES	$\pm 1^\circ$	UNIT: mm		
	SCALE: 2/1	SHEET: 1/2	REV: A	DWG NO.: LP13072403

Mechanical:

REV.	ECN NO.	DESCRIPTION	DATE	APPD
A	REL		2013/07/24	



NOTES:

1. 100/1000Base-Tx Transformer
2. For RoHS part add suffix NL.
3. RoHS "NL" peak solder rating $260^{\circ}\text{C} \pm 5^{\circ}\text{C}$.
4. UL Certification: File Number E484635.



X:X	± 0.30	APPD:	LINK-PP INT'L TECHNOLOGY CO., LIMITED
X:XX	± 0.25	CHKD:	
X:XXX	± 0.05	DR: TOM	TITLE: 100/1000BASE-TX TRANSFORMER
ANGLES	$\pm 1^{\circ}$	UNIT: mm	PART NO.: LP82458PNL
	SCALE: 2/1	SHEET: 2/2	REV: A DWG NO.: LP13072403