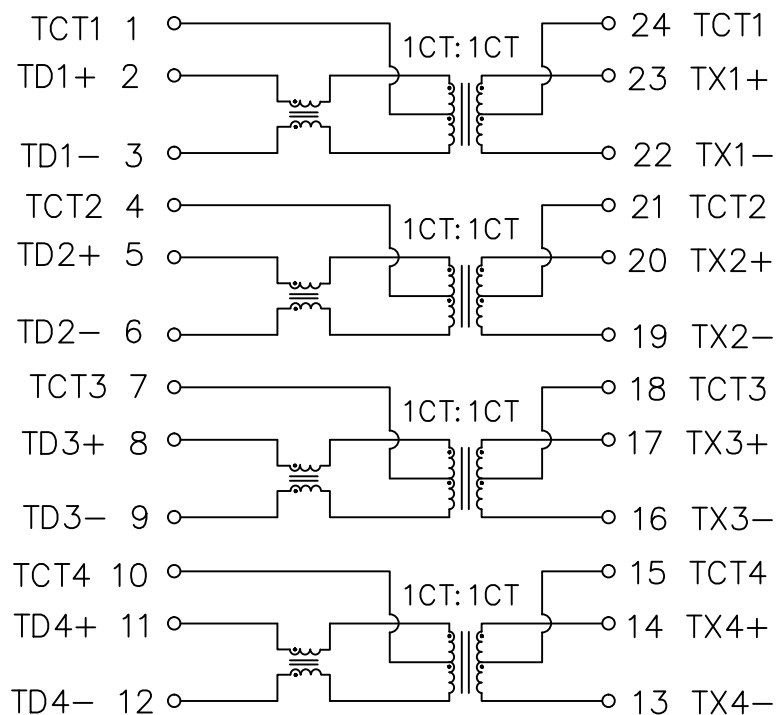


Schematic:

| REV. | ECN NO. | DESCRIPTION | DATE | APPD |
|------|---------|-------------|------------|------|
| A | REL | | 2022-05-20 | |

PHY SIDE

RJ SIDE



ELECTRICAL SPECIFICATIONS @25°C

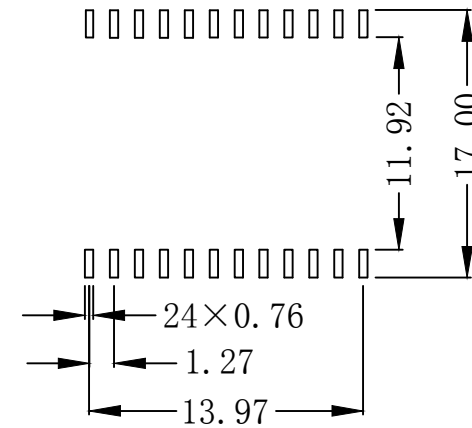
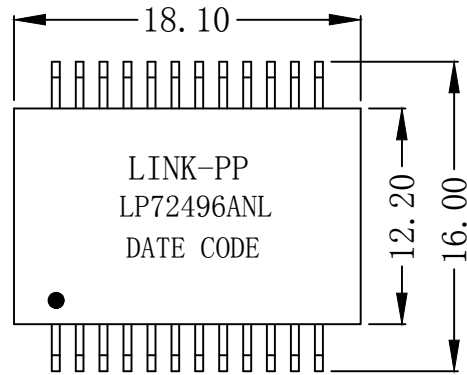
- Turn Ratio : 1CT:1CT +/- 5%
- OCL: 200uH Min @100KHz , 0.1V
- Insertion Loss (dB Max):
1-100MHz: -1.0 100-125MHz: -1.5
- Return Loss(dB Min):
1-30MHz: -16 30-100MHz: -12
100-150MHz: -10
- Cross Talk:
1-125MHz: -25dB Min.
- Common Mode Rejection(dB Min):
1-125MHz: -30
- Common Mode to Differential Mode Rejection(dB Min):
1-100MHz: -30 100-125MHz:-25.
- Isolation Hi-Pot: 2250VDC Min@ 60S
- Operating Temperature Range: -40°C ~ +85°C.



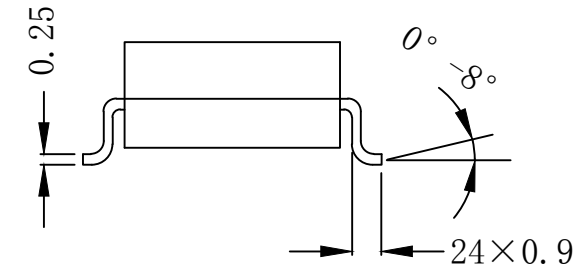
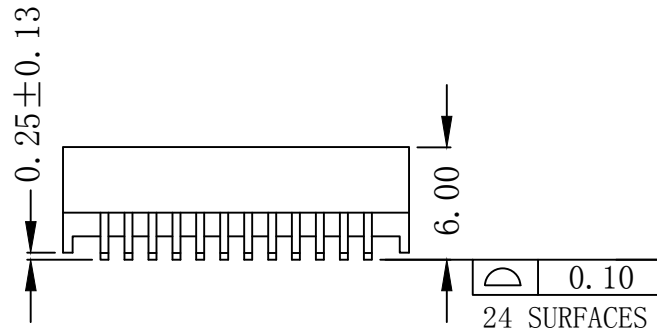
| | | |
|------------|------------|--|
| X:X | APPD: | LINK-PP INT'L TECHNOLOGY CO., LIMITED |
| X:XX ±0.25 | CHKD: | |
| X:XXX | DR: TOM | TITLE: 2.5G Base-T Lan Transformer For PoE++ Application |
| ANGLES ±1° | UNIT: mm | PART NO.: LP72496ANL |
| | SCALE: 2/1 | SHEET: 1/2 |
| | REV: A | DWG NO.: LP22052005 |

Mechanical:

| REV. | ECN NO. | DESCRIPTION | DATE | APPD |
|------|---------|-------------|------------|------|
| A | REL | | 2022-05-20 | |



SUGGESTED PAD LAYOUT



NOTES:

1. Design for 2.5G ethernet application.
2. Complying with IEEE802.3bt standard.
3. PoE applications with 1.2A current capability.
4. Complying with RoHS requirements.
5. Maximum reflow temperature is 250°C, 5 Sec.
6. UL Certification: File Number E484635.



| | | |
|------------|------------|--|
| X:X | APPD: | LINK-PP INT'L TECHNOLOGY CO., LIMITED |
| X:XX ±0.25 | CHKD: | |
| X:XXX | DR: TOM | TITLE: 2.5G Base-T Lan Transformer For PoE++ Application |
| ANGLES ±1° | UNIT: mm | PART NO.: LP72496ANL |
| | SCALE: 2/1 | SHEET: 2/2 |
| | REV: A | DWG NO.: LP22052005 |