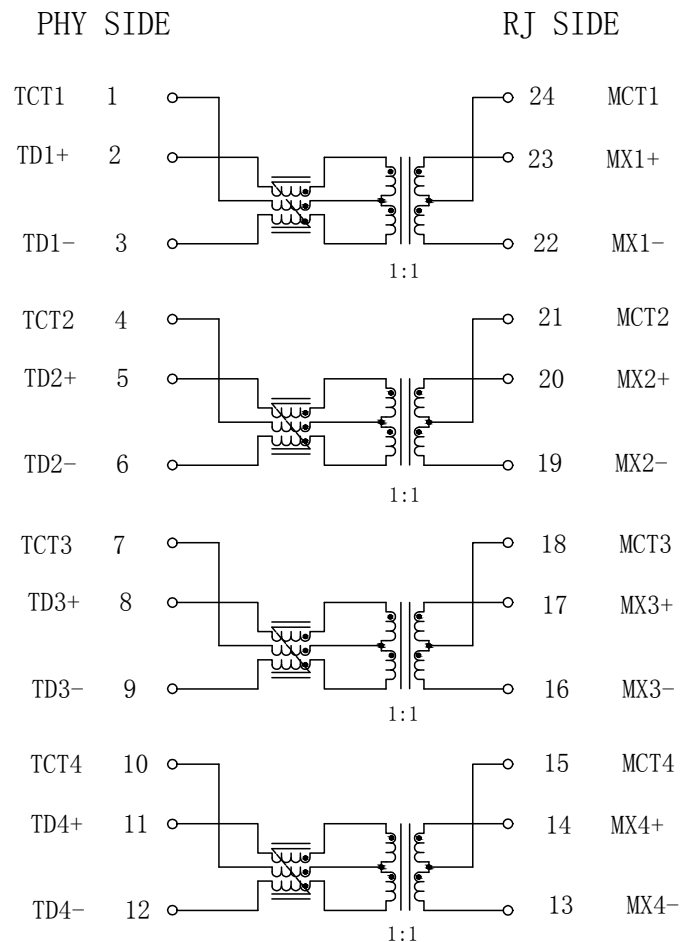


Schematic:

REV.	ECN NO.	DESCRIPTION	DATE	APPD
A	REL		2021-07-25	



ELECTRICAL SPECIFICATIONS @25°C

- Turn Ratio : 1CT:1CT $\pm 2\%$
- OCL: 120uH Min @100KHz , 0.1V With 25.0mA DC
- Insertion Loss (dB Max):

1-200MHz: -1.0	200-300MHz: -1.8
300-400MHz: -2.0	400-500MHz: -3.0
- Return Loss(dB Min):

1-100MHz: -18	100-200MHz: -14.5
200-300MHz: -11.3	300-400MHz: -8.0
400-500MHz: -6.5	
- Cross Talk(dB TYP):

1-500MHz: -22

- CMRR(dB TYP):

1-500MHz: -22

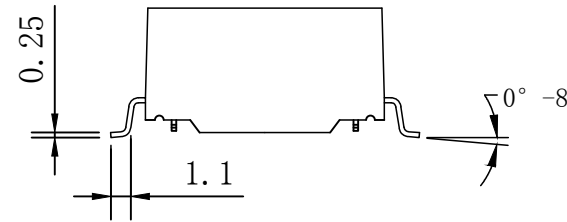
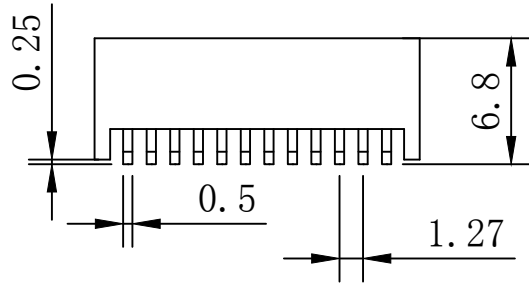
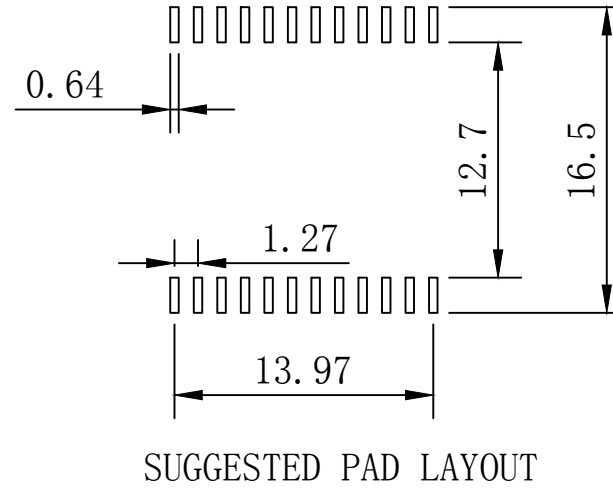
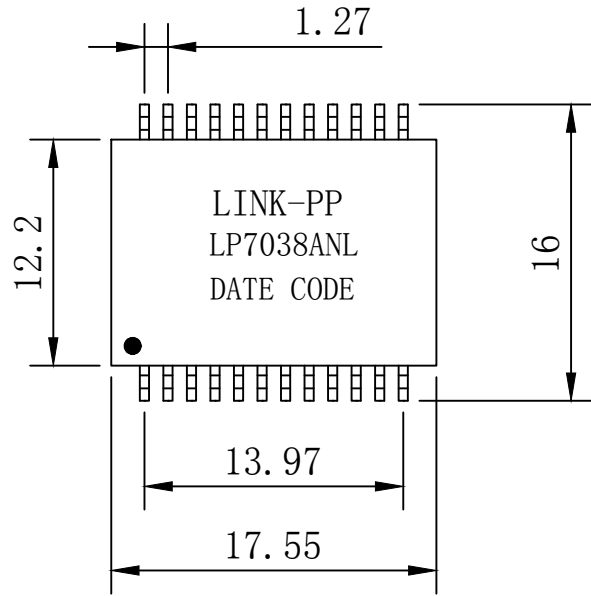
- Hi-Pot: 1500Vrms
- Operating Temperature Range: $-40^{\circ}\text{C} \sim +85^{\circ}\text{C}$.



X:X	APPD:	LINK-PP INT'L TECHNOLOGY CO., LIMITED
X:XX ± 0.25	CHKD:	
X:XXX	DR: LEO	TITLE: 10G SMD Transformer
ANGLES $\pm 1^{\circ}$	UNIT: mm	PART NO.: LP7038ANL
	SCALE: 2/1	SHEET: 1/2
	REV: A	DWG NO.: LP21072502

Mechanical :

REV.	ECN NO.	DESCRIPTION	DATE	APPD
A	REL		2021-07-25	



NOTES:

1. Design for 10G ethernet application.
2. Complying with IEEE802.3bt standard.
3. Power over Ethernet (POE) Magnetics, 4PPoE 2000mA application
4. Complying with RoHS requirements.
5. Maximum reflow temperature is 250°C, 5 Sec.
6. UL Certification: File Number E484635.



X:X	APPD:	LINK-PP INT'L TECHNOLOGY CO., LIMITED
X:XX ±0.25	CHKD:	
X:XXX	DR: LEO	TITLE: 10G SMD Transformer
ANGLES ±1°	UNIT: mm	PART NO.: LP7038ANL
	SCALE: 2/1	SHEET: 2/2
	REV: A	DWG NO.: LP21072502