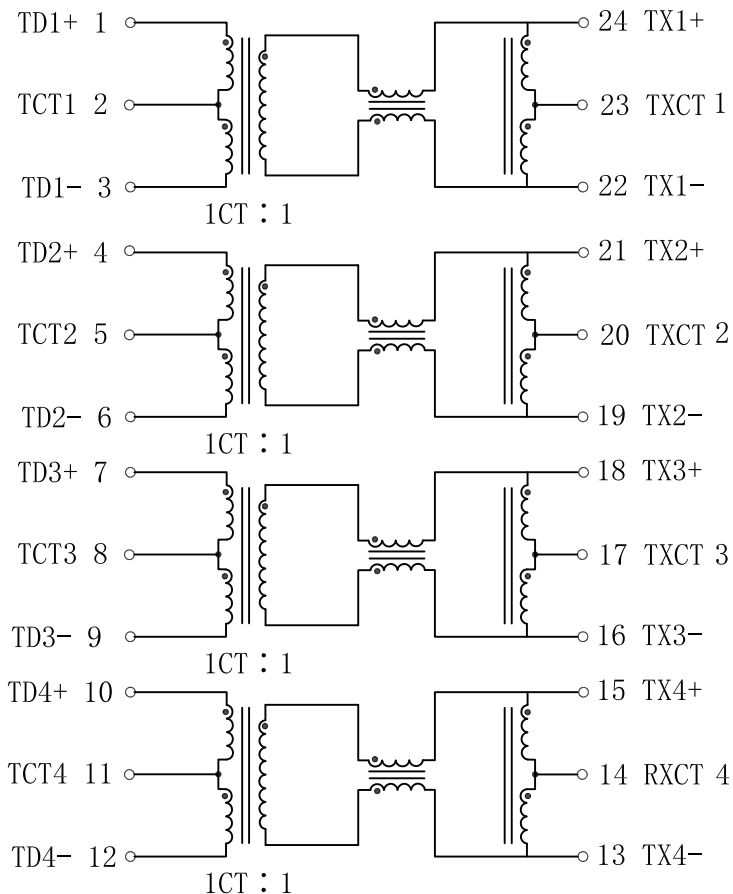


Schematic:

REV.	ECN NO.	DESCRIPTION	DATE	APPD
B	REL		2015-06-03	

CHIP SIDE



MEDIA SIDE

Electrical Specifications @25°C

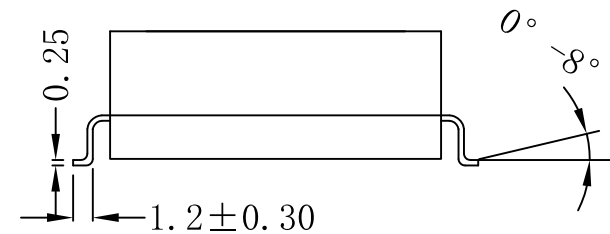
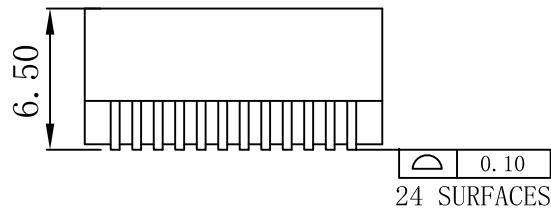
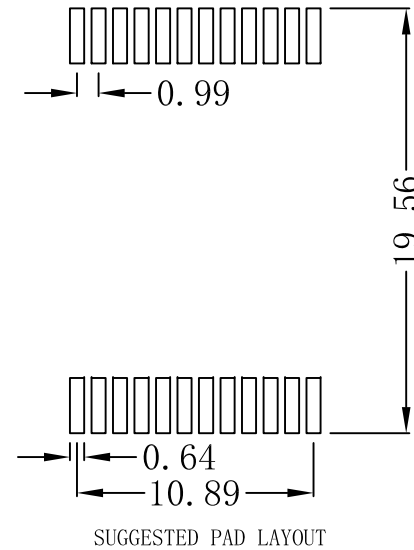
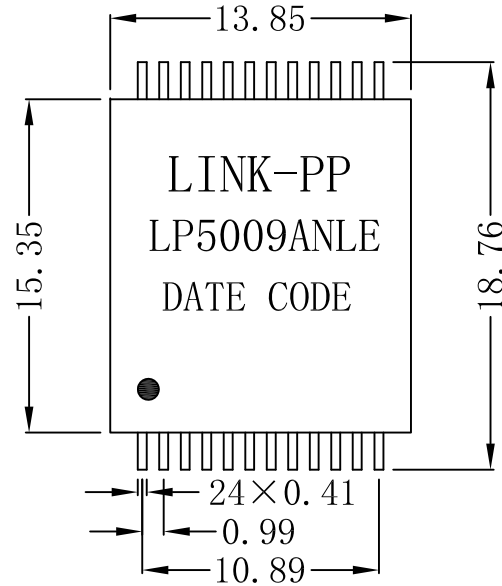
- Turns Ratio ($\pm 2\%$):
Pri:Sec = 1CT:1
- Inductance (@100KHz, 100mV, 8mA):
350uH MIN
- Insertion Loss:
1-100MHz: -1.0dB Max
- Return Loss (dB Min):
1-30MHz: -18 40MHz: -18
50MHz: -16 60-80MHz: -12
100MHz: -10
- Crosstalk (dB Min):
30MHz: -45 60MHz: -40
100MHz: -35
- DCMR (dB Min):
30MHz: -43 60MHz: -37
100MHz: -33
- Hipot: 1500Vrms Min
- Operating Temperature: -40°C ~ +85°C.



X:X	APPD:	LINK-PP INT'L TECHNOLOGY CO., LIMITED		
X:XX ±0.25	CHKD:	TITLE: 1000 Base-TX VoIP Magnetic Modules		
X:XXX	DR: TOM	PART NO.: LP5009ANLE		
ANGLES ±1°	UNIT: mm			
	SCALE: 2/1	SHEET: 1/2	REV: B	DWG NO.: LP15052326

Mechanical:

REV.	ECN NO.	DESCRIPTION	DATE	APPD
B	REL		2015-06-03	



NOTES:

1. Designed to support application, such as SOHO (ADSL modems), LAN-on-Motherboard (LOM), hub and Switches.
2. Meets IEEE 802.3 specification.
3. Maximum reflow temperature is 250°C, 5 Sec.
4. UL certification: file number E484635



X:X	APPD:	LINK-PP INT'L TECHNOLOGY CO., LIMITED
X:XX ±0.25	CHKD:	
X:XXX	DR: TOM	TITLE: 1000 Base-TX VoIP Magnetic Modules
ANGLES ±1°	UNIT: mm	PART NO.: LP5009ANLE
	SCALE: 2/1	SHEET: 2/2
	REV: B	DWG NO.: LP15052326