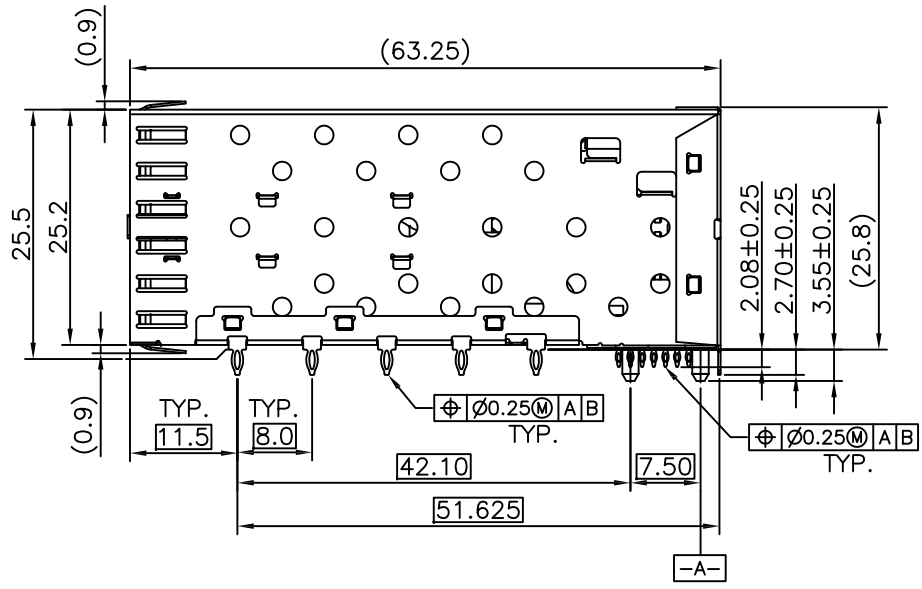
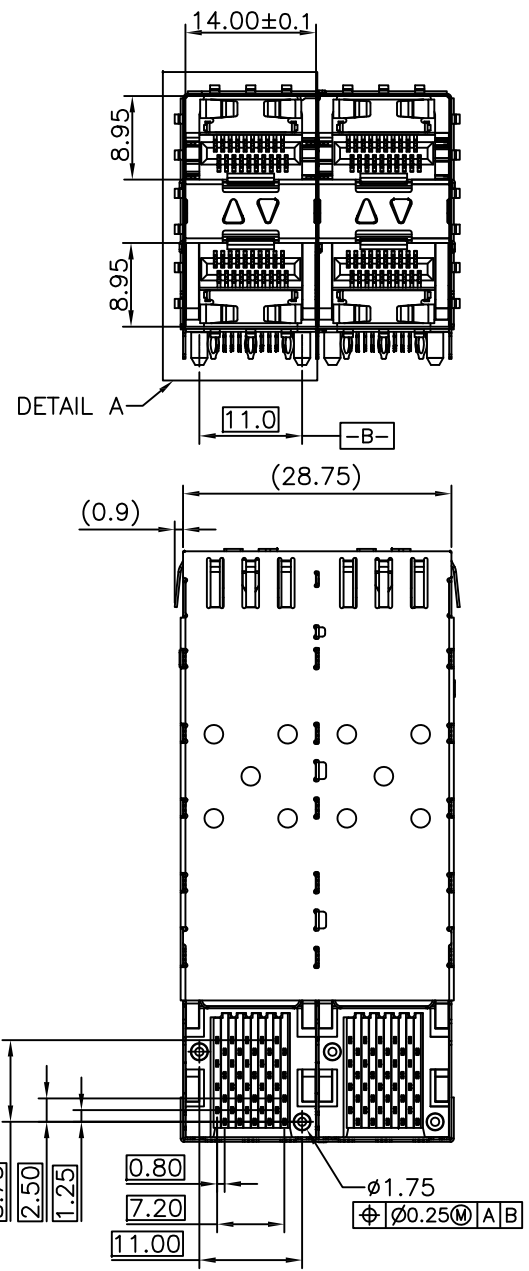


| | | | |
|-----|-----------------------|-------------|------------|
| REV | DESCRIPTION OF CHANGE | REVIEWED BY | ISSUE DATE |
| A | FIRST ISSUE | James | 2021-08-01 |

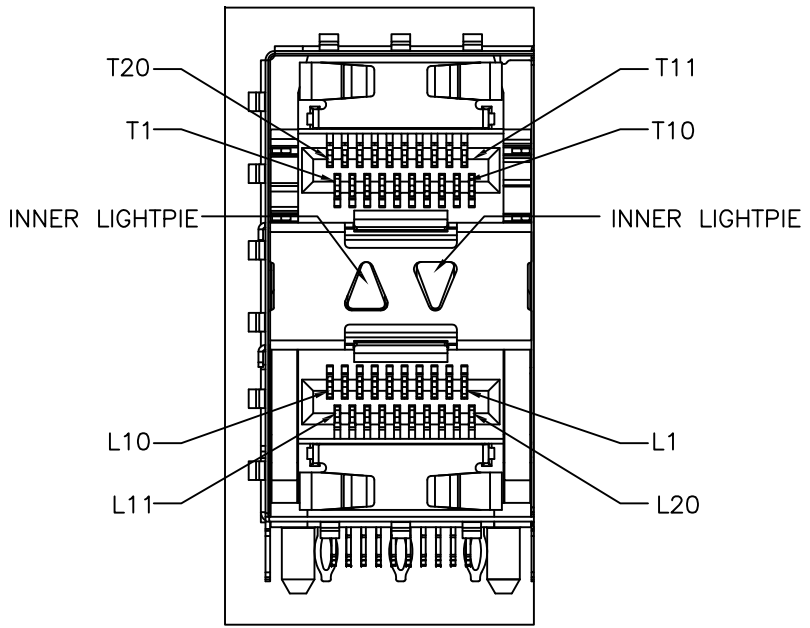
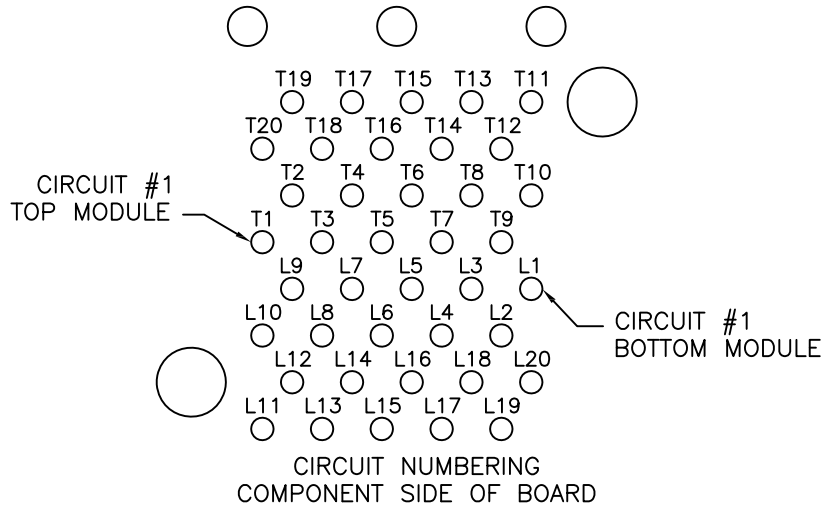


NOTES:

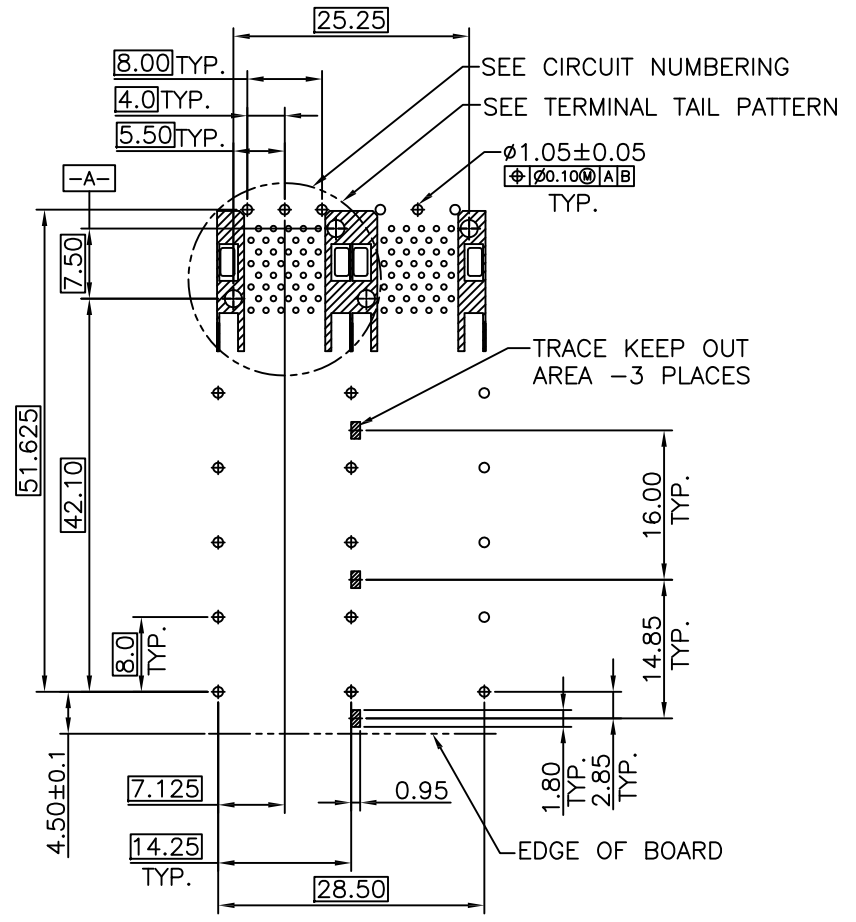
- MATERIAL:
- CAGE: COPPER ALLOY 30u" MIN NI-PLATED, THICKNESS 0.25 MM
- CONNECTOR:
- PLASTIC HOUSING: HIGH TEMPERATURE LCP, UL94 V-0.
- LIGHT PIPE: POLYCARBONATE; COLOR: CLEAR
- SPRING: STAINLESS STEEL, THICKNESS 0.20mm
- CONTACTS: PHOSPHOR BRONZE, THICKNESS 0.20mm
- PLATING: 15u" MIN. GOLD ON MATING AREA, 150u" MIN. MATE TIN ON SOLDER TAILS.
- PACKAGING: TRAY PACKAGING.
- OPERATING TEMPERATURE: -40°C TO +85°C
- STORAGE TEMPERATURE: -55°C TO +105°C



| | | | | | | |
|------------------------|-------|-------|---------------------------------------|--------|------------|-----------|
| TITLE | | | LINK-PP INT'L TECHNOLOGY CO., LIMITED | | | |
| SFP 2X2 CAGE+CONNECTOR | | | | | | |
| PART NO. | | | GENERAL TOLERANCE | | UNIT:MM | SIZE: A4 |
| LP22AC01201 | | | | | | |
| APPROVE | CHECK | DRAW | .X±0.20 | .X±1' | SCALE: 1:1 | SHEET:1/4 |
| James | Kevin | Kevin | .XX±0.15 | .XX±5' | | |
| | | | .XXX±0.10 | | | |



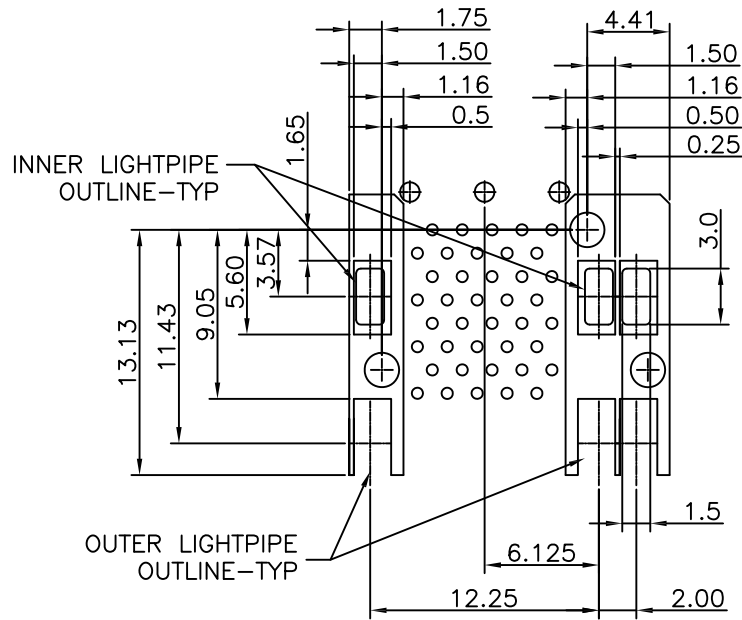
DETAIL A
CIRCUIT NUMBERING
AND LIGHTPIPE INDENT/CIRCATION



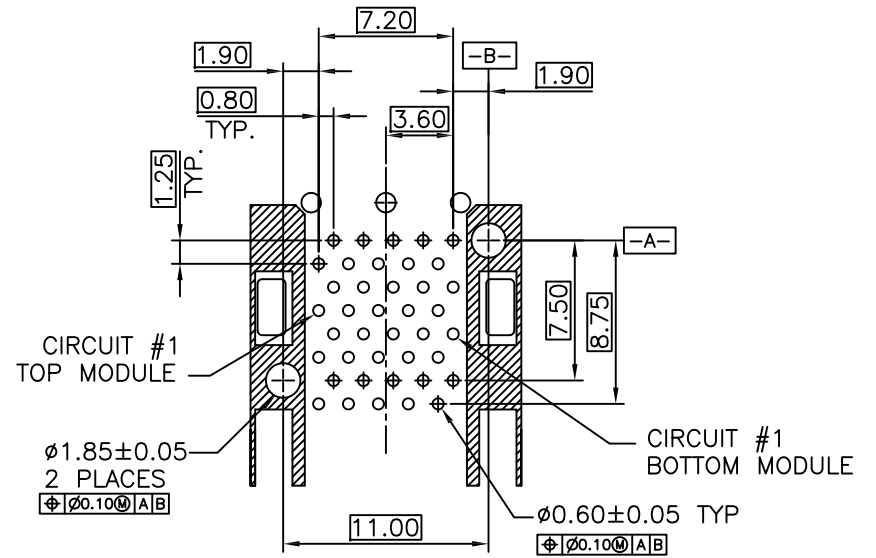
RECOMMENDED PCB LAYOUT - COMPONENT SIDE
RECOMMENDED PCB THICKNESS : 2.36MM(.093 INCH)
(MINIMUM PCB THICKNESS : 1.57)

THE ENTIRE AREA OF THE CONNECTOR FOOTPRINT
TO BE CONSIDERED THE KEEP OUT AREA FOR COMPONENTS
THIS AREA IS INDICATED BY THE DASHED LINE

| | | | | | | |
|------------------------|-------|-------|---------------------------------------|--------|------------|-----------|
| TITLE | | | LINK-PP INT'L TECHNOLOGY CO., LIMITED | | | |
| SFP 2X2 CAGE+CONNECTOR | | | | | | |
| PART NO. | | | GENERAL TOLERANCE | | UNIT:MM | SIZE: A4 |
| LP22AC01201 | | | | | | |
| APPROVE | CHECK | DRAW | .X±0.20 | .X±1' | SCALE: 1:1 | SHEET:2/4 |
| James | Kevin | Kevin | .XX±0.15 | .XX±5' | | |
| | | | .XXX±0.10 | | | |



DETAIL-KEEPOUT ZONES

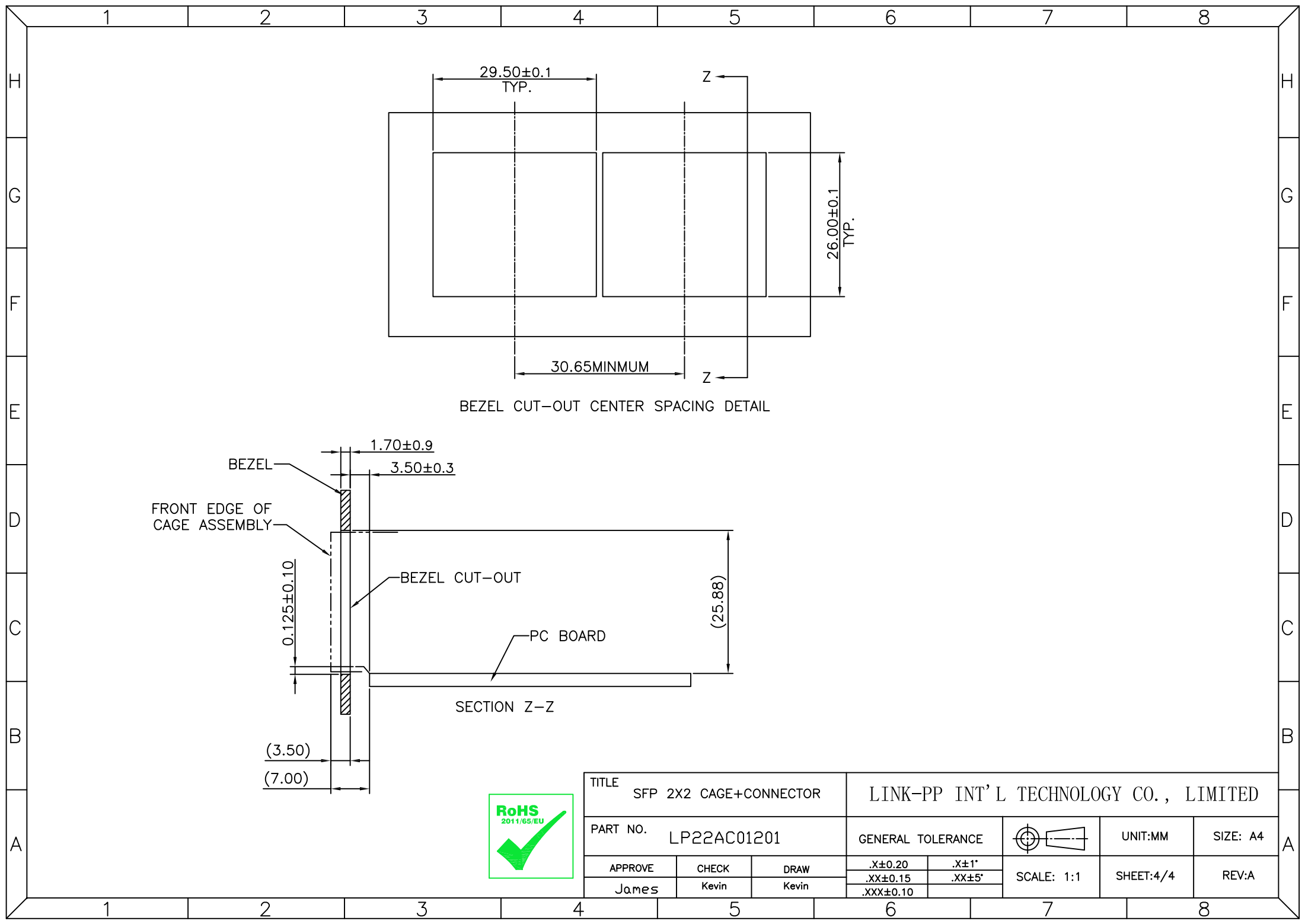


TERMINAL TAIL PATTERN

THE HATCHED AREA IN THIS VIEW INDICATES ZONES THAT ARE OCCUPIED BY THE PLASTIC HOUSING THAT SEATS AGAINST THE PCB AND BY THE VERTICAL METAL CAGE WALL THAT STOPS JUST SHORT OF THE PCB



| | | | | | |
|------------------------|-------|-------|---------------------------------------|--------|------------|
| TITLE | | | LINK-PP INT'L TECHNOLOGY CO., LIMITED | | |
| SFP 2X2 CAGE+CONNECTOR | | | | | |
| PART NO. | | | GENERAL TOLERANCE | | UNIT:MM |
| LP22AC01201 | | | .X±0.20 | .X±1' | SIZE: A4 |
| APPROVE | CHECK | DRAW | .XX±0.15 | .XX±5' | SCALE: 1:1 |
| James | Kevin | Kevin | .XXX±0.10 | | SHEET:3/4 |
| | | | | | REV:A |



BEZEL CUT-OUT CENTER SPACING DETAIL

SECTION Z-Z



| | | | | | |
|------------------------|-------|-------|---------------------------------------|--------|------------|
| TITLE | | | LINK-PP INT'L TECHNOLOGY CO., LIMITED | | |
| SFP 2X2 CAGE+CONNECTOR | | | | | |
| PART NO. | | | GENERAL TOLERANCE | | UNIT:MM |
| LP22AC01201 | | | | | SIZE: A4 |
| APPROVE | CHECK | DRAW | .X±0.20 | .X±1' | SCALE: 1:1 |
| James | Kevin | Kevin | .XX±0.15 | .XX±5' | |
| | | | .XXX±0.10 | | |
| | | | SHEET:4/4 | | REV:A |