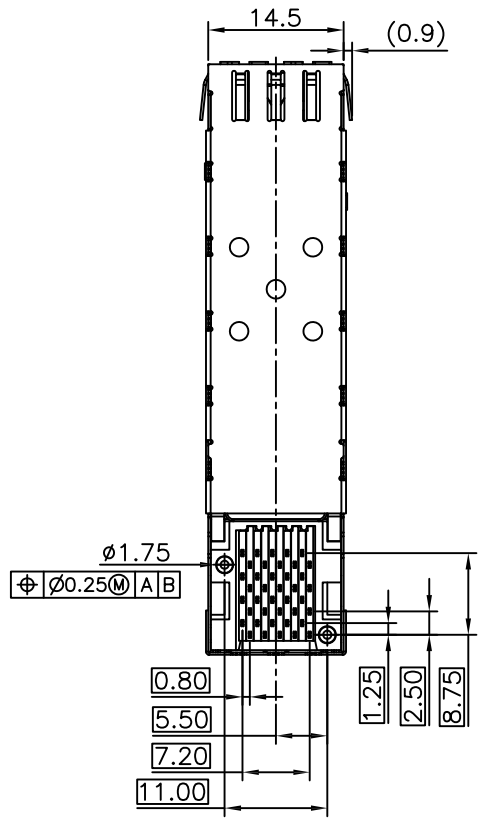
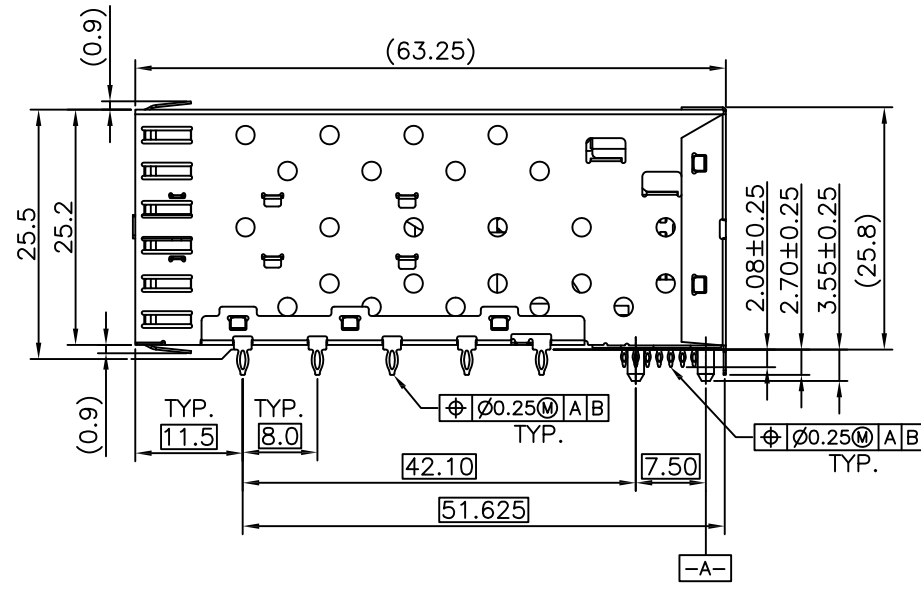
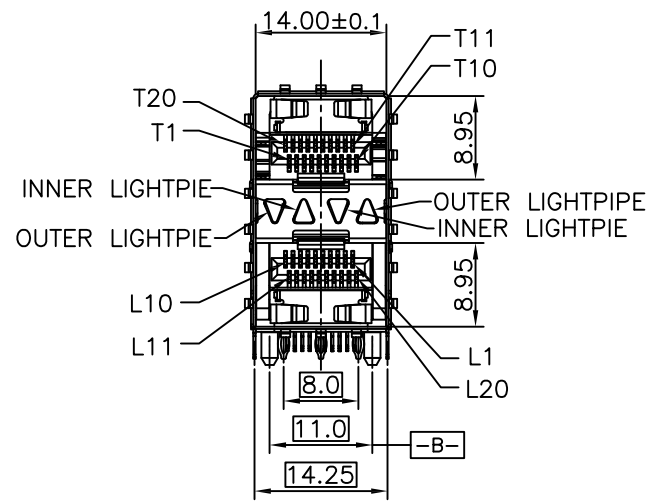


REV	DESCRIPTION OF CHANGE	REVIEWED BY	ISSUE DATE
A	FIRST ISSUE	James	2021-08-01

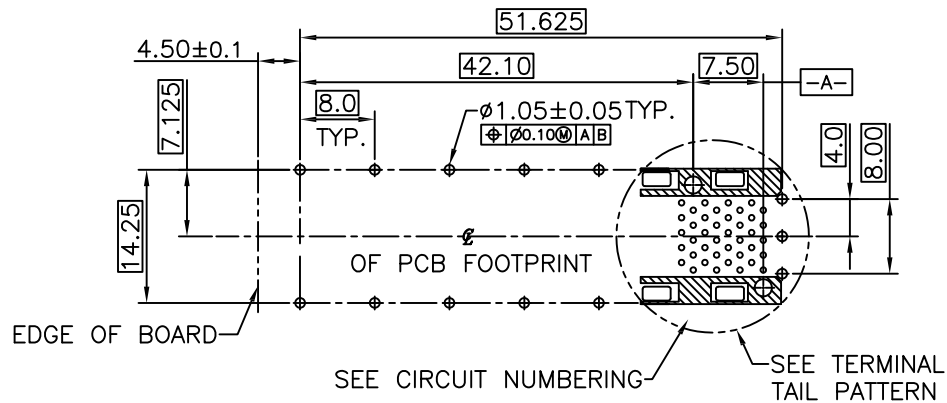


NOTES:

- MATERIAL:
- CAGE: COPPER ALLOY 30u" MIN NI-PLATED, THICKNESS 0.25 MM
- CONNECTOR:
- PLASTIC HOUSING: HIGH TEMPERATURE LCP, UL94 V-0.
- LIGHT PIPE: POLYCARBONATE; COLOR: CLEAR
- SPRING: STAINLESS STEEL, THICKNESS 0.20mm
- CONTACTS: PHOSPHOR BRONZE, THICKNESS 0.20mm
- PLATING: 15μ" MIN. GOLD ON MATING AREA,
150μ" MIN. MATE TIN ON SOLDER TAILS.
- PACKAGING: TRAY PACKAGING.
- TEMPERATURE RANGE: -40°C TO +85°C
- STORAGE TEMPERATURE: -55°C TO +105°C



TITLE			LINK-PP INT'L TECHNOLOGY CO., LIMITED		
SFP 2X1 CAGE+CONNECTOR					
PART NO.			GENERAL TOLERANCE		UNIT:MM
LP21AC01101					SIZE: A4
APPROVE	CHECK	DRAW	.X±0.20	.X±1'	SCALE: 1:1
James	Kevin	Kevin	.XX±0.15	.XX±5'	
			.XXX±0.10		
			SHEET:1/3		REV:A

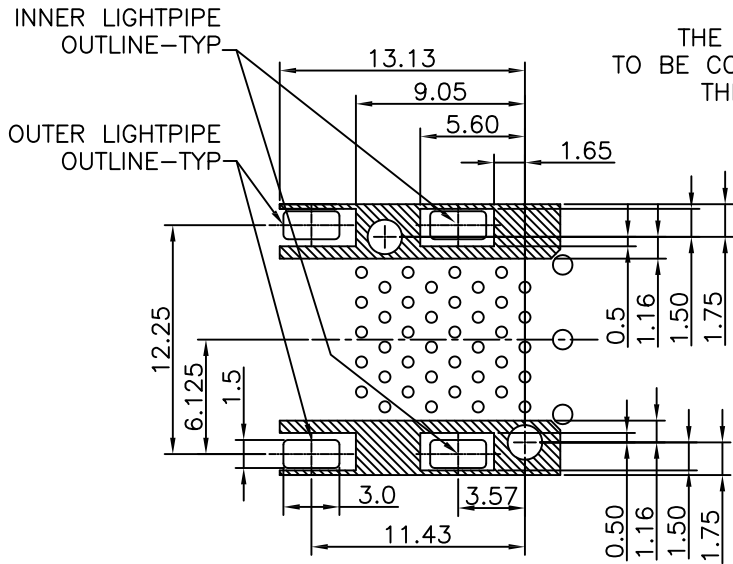


SEE CIRCUIT NUMBERING SEE TERMINAL TAIL PATTERN
 RECOMMENDED PCB LAYOUT – COMPONENT SIDE
 RECOMMENDED PCB THICKNESS : 2.36MM(.093 INCH)
 (MINIMUM PCB THICKNESS : 1.57)

THE ENTIRE AREA OF THE CONNECTOR FOOTPRINT TO BE CONSIDERED THE KEEP OUT AREA FOR COMPONENTS THIS AREA IS INDICATED BY THE DASHED LINE

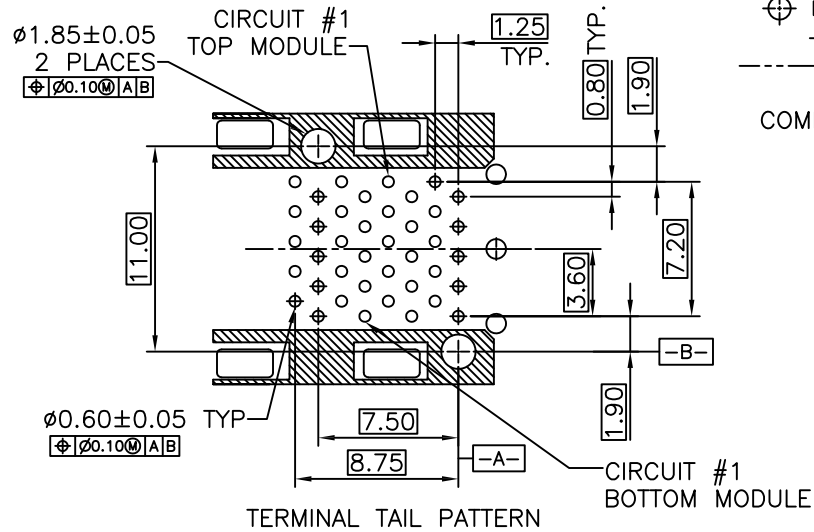
L11	L10	T1	T20
⊕ L12	⊕ L9	⊕ T2	⊕ T19
⊕ L13	⊕ L8	⊕ T3	⊕ T18
⊕ L14	⊕ L7	⊕ T4	⊕ T17
⊕ L15	⊕ L6	⊕ T5	⊕ T16
⊕ L16	⊕ L5	⊕ T6	⊕ T15
⊕ L17	⊕ L4	⊕ T7	⊕ T14
⊕ L18	⊕ L3	⊕ T8	⊕ T13
⊕ L19	⊕ L2	⊕ T9	⊕ T12
⊕ L20	⊕ L1	⊕ T10	⊕ T11

CIRCUIT NUMBERING COMPONENT SIDE OF BOARD



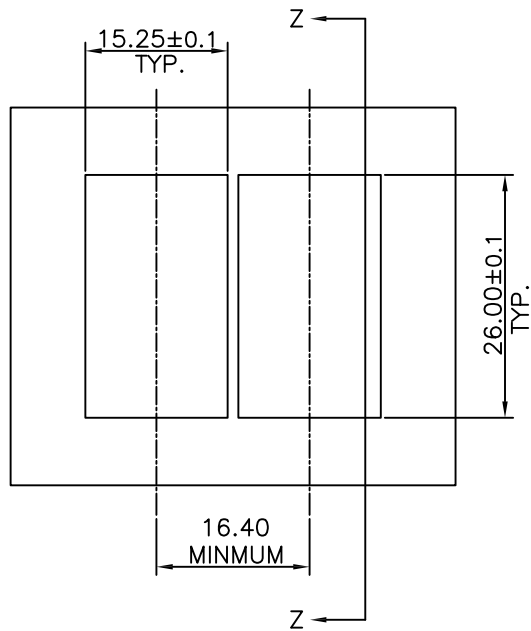
DETAIL-KEEPOUT ZONES

THE HATCHED AREA IN THIS VIEW INDICATES ZONES THAT ARE OCCUPIED BY THE PLASTIC HOUSING THAT SEATS AGAINST THE PCB AND BY THE VERTICAL METAL CAGE WALL THAT STOPS JUST SHORT OF THE PCB

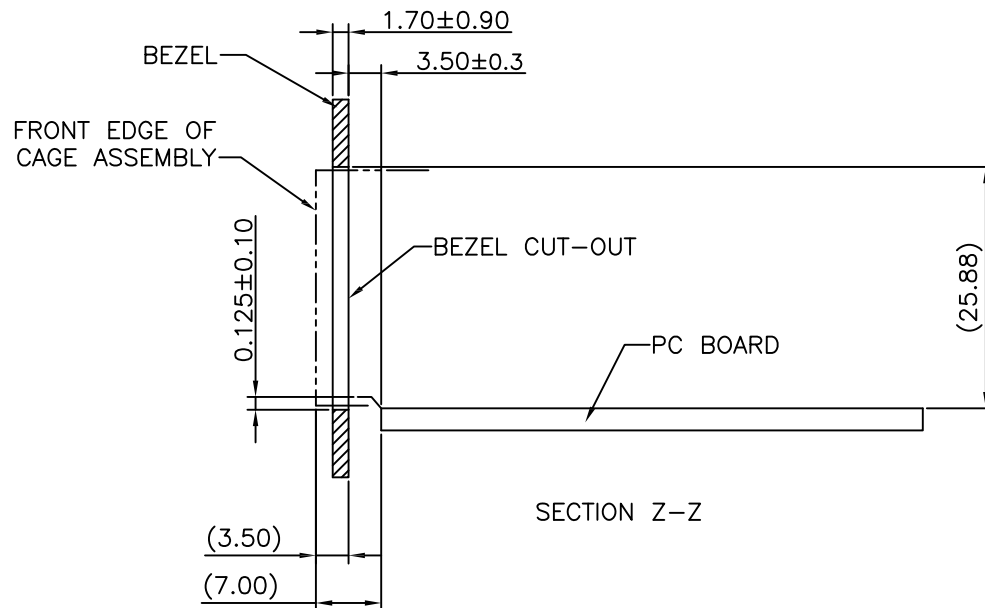


TERMINAL TAIL PATTERN

TITLE			LINK-PP INT'L TECHNOLOGY CO., LIMITED		
SFP 2X1 CAGE+CONNECTOR					
PART NO.			GENERAL TOLERANCE		UNIT:MM
LP21AC01101			.X±0.20 .X±1'		SIZE: A4
APPROVE	CHECK	DRAW	SCALE: 1:1		SHEET:2/3
James	Kevin	Kevin	.XX±0.15 .XX±5'		REV:A
			.XXX±0.10		



BEZEL CUT-OUT CENTER SPACING DETAIL



SECTION Z-Z



TITLE			SFP 2X1 CAGE+CONNECTOR		LINK-PP INT'L TECHNOLOGY CO., LIMITED					
PART NO.			LP21AC01101		GENERAL TOLERANCE			UNIT:MM	SIZE: A4	
APPROVE	CHECK	DRAW	.X±0.20	.X±1'	SCALE: 1:1		SHEET:3/3		REV:A	
James	Kevin	Kevin	.XX±0.15	.XX±5'						
			.XXX±0.10							