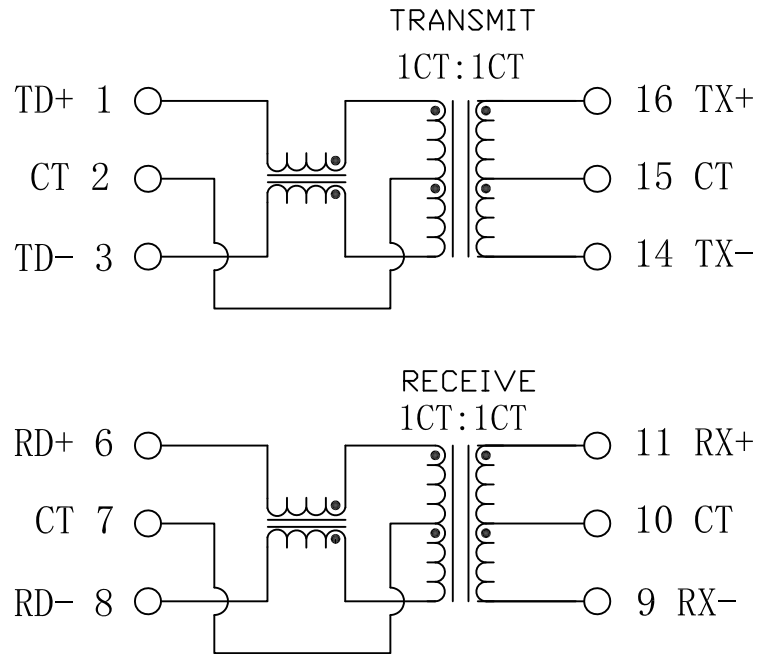


Schematic:

REV.	ECN NO.	DESCRIPTION	DATE	APPD
A	REL		23/06/2009	



ELECTRICAL SPECIFICATIONS @25°C

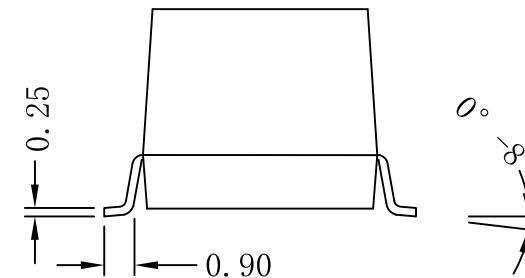
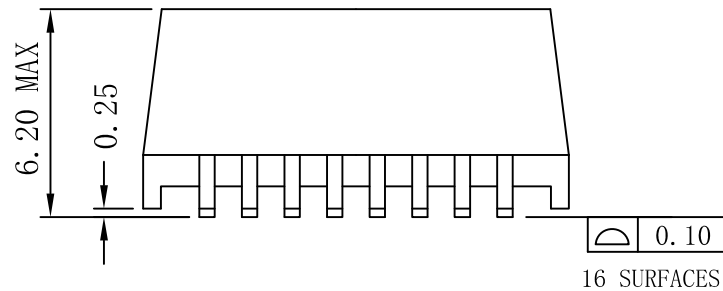
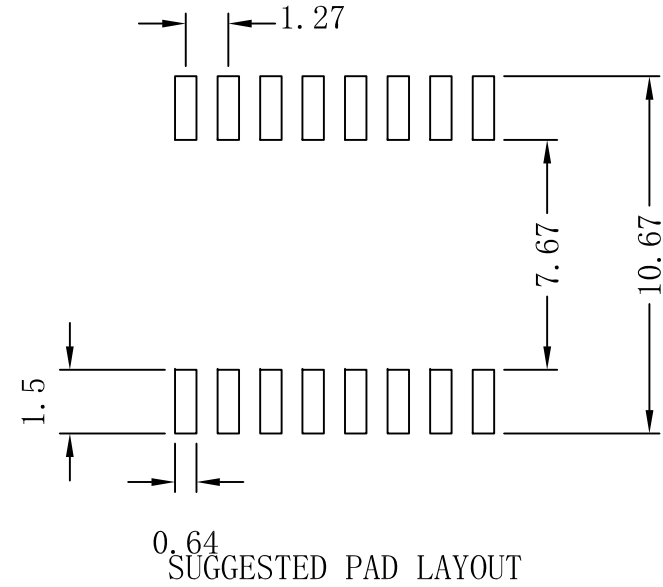
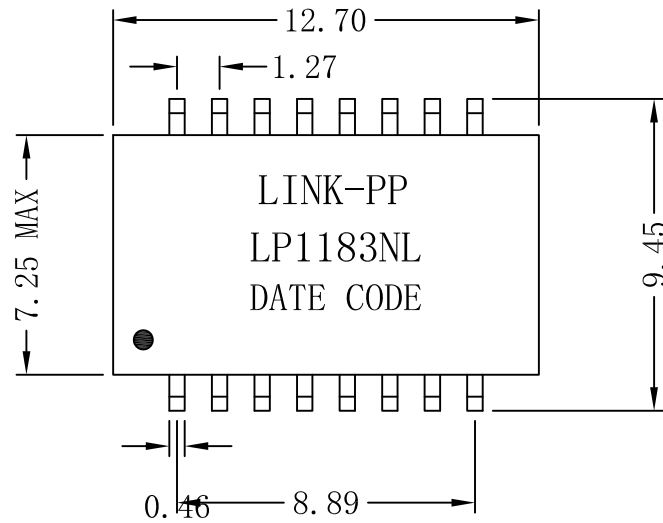
- Turn Ratio($\pm 3\%$):
TX=1CT:1CT RX=1CT:1CT
- Inductance OCL:
350uH MIN @ 100KHz 0.1V 8mA DC Bias
- Insertion Loss:
-1.0dB MAX @ 1-100MHz
- Return Loss:
-18dB TYP @ 1-30MHz
-14dB TYP @ 30-60MHz
-12dB TYP @ 60-100MHz
- Cross talk:
-35dB TYP @ 1-30MHz
-35dB TYP @ 30-60MHz
-35dB TYP @ 60-100MHz
- Common Mode Rejection:
-40dB TYP @ 1-30MHz
-40dB TYP @ 30-50MHz
-40dB TYP @ 50-100MHz
- Hipot Test: 1500Vrms
- Operating Temperature Range: 0°C TO 70°C



X:X	APPD:	LINK-PP INT'L TECHNOLOGY CO., LIMITED	
X:XX ±0.25	CHKD:	TITLE: 10/100Base-T Single Port Transformer Modules	
X:XXX	DR: TOM	PART NO. : LP1183NL	
ANGLES ±1°	UNIT: mm		
	SCALE: 2/1	SHEET: 1/2	REV: A DWG NO. :

Mechanical:

REV.	ECN NO.	DESCRIPTION	DATE	APPD
A	REL		23/06/2009	



NOTES:

1. Designed to support application, such as SOHO (ADSL modems), LAN-on-Motherboard (LOM), hub and Switches.
2. Meets IEEE 802.3 specification.
3. Maximum reflow temperature is 250°C, 5 Sec.
4. UL certification: file number E484635



Dimensions: mm

Unless otherwise specified, all tolerances are ± 0.25

X:X	APPD:	LINK-PP INT'L TECHNOLOGY CO., LIMITED		
X:XX ± 0.25	CHKD:	TITLE: 10/100Base-T Single Port Transformer Modules		
X:XXX	DR: TOM	PART NO.: LP1183NL		
ANGLES $\pm 1^\circ$	UNIT: mm			
	SCALE: 2/1	SHEET: 2/2	REV: A	DWG NO.: